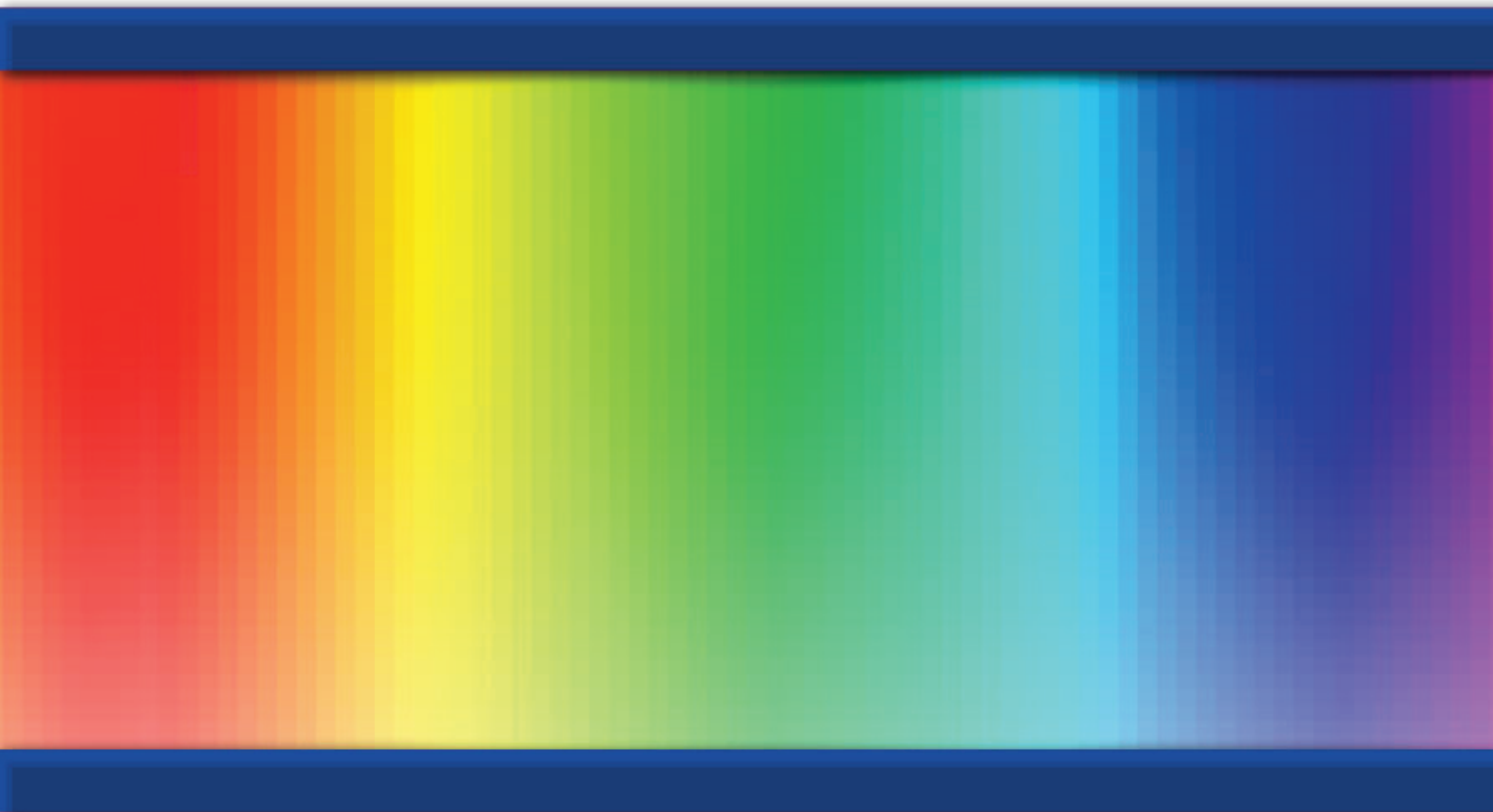




Product Catalog

September 2013 edition



www.rosco.com

- **Color and Correction Filters**2
- **Dance Floors**5
- **Fog Machine and Fluids**8
- **Gobos and Projection Equipment**10
- **Luminaire and Lighting Accessories**15
- **Scenic Shop Products**21
- **Staging Products for Theater, Film & Video**26

JOIN US →  Find us on Facebook  Follow us on twitter  Watch us on YouTube  Follow Our Blog SPECTRUM

*Clearance items will be discontinued after current inventory has been exhausted. Contact Rosco for more information.

■ Roscolux

Roscolux is the most widely used color filter range for theatre, film, television, live entertainment and architectural applications. For a detailed list of the colors and diffusers of the range consult the Roscolux swatchbook or Rosco web site.



Roscolux Sheets 20" x 24"
Rolls 24" x 25'

■ E-Colour+

A comprehensive range of European color and correction filters based on the Cinemoid™ system. For a detailed list of colors, diffusers and reflection materials consult the E-Colour+ swatch book or the Rosco web site.



E-Colour+ Sheets 21" x 24"
E-Colour+ Rolls 48" x 25'

■ Cinegel

The Academy Award® winning range of color and correction filters, Cinegel includes diffusers, reflectors and the Storaro Selection and CalColor filters. For a detailed list of products, consult the Cinegel swatchbook or the Rosco web site.



Cinegel Sheets 20" x 24"
Cinegel Rolls
Diffusion Rolls
 (Most rolls are 48" x 25'.)

PROTECTIVE FILTERS

■ Thermashield

When used in conjunction with Roscolux or Cinegel color filters, Thermashield prevents the color filters from absorbing IR energy as heat, thus allowing the filters to last much longer. For maximum efficiency, a minimum 1" air space must be maintained between Thermashield and the color filter.

Thermashield 12" x 12"
 No. 101 01995 1212
Thermashield 20" x 24"
 No. 101 01995 2024
Thermashield 48" x 48"
 No. 101 01995 4804

■ Super Heat Shield™

Super Heat Shield is a heat resistant plastic that acts as a barrier, blocking the heat of a fixture. For maximum efficiency, a minimum 1" air space must be maintained between Super Heat Shield and the color filter.

Super Heat Shield 20" x 24" sheet
 No. 101 01991 2024
Super Heat Shield 24" x 25' roll
 No. 101 01991 2425
Super Heat Shield 24" x 50' roll
 No. 101 01991 2450
Super Heat Shield 48" x 25' roll
 No. 101 01991 4825

■ UV Filter™

Rosco UV Filter effectively extends the life of your color filter by absorbing the damaging ultraviolet energy that can prematurely fade dyes.

UV Filter 20" x 24" sheet
 No. 101 03114 2024
UV Filter 24" x 50' roll
 No. 101 03114 2450
UV Filter 48" x 25' roll
 No. 101 03114 4825

■ Safety Frames™

For use with Roscolux, Cinegel or E-Colour+ gel filters. Made from FRP, an Underwriter's Laboratories approved flame retardant fiberboard. The material remains cool for safe handling and has a UL94 Flammability Classification of 94V-0.

No. 110 08600

Add to Product No.	Frame Size	Lens Size
0750	7½"	5⅞"
0975	9¾"	7¾"
0625	6¼"	5"

Color Effects Kit

The fifteen color effects filters in this kit are the most popular selections from the 300-plus colors that Rosco produces for theatre, film and television. Available either 10" x 12" in a durable plastic pouch, or 20" x 24" in a convenient tube.

Color Effects Kit 10" x 12"

No. 110 09040 SKIT

Color Effects Kit 20" x 24"

No. 110 09040 LKIT

Color Correction Kit

This kit permits the color correction of virtually all mixed-light sources found on location. There are sixteen materials, including a range of blue and amber color correction filters, along with a selection of green and magenta color compensating filters. Available either 10" x 12" in a durable plastic pouch, or 20" x 24" in a convenient tube.

Color Correction Kit 10" x 12"

No. 110 09030 SKIT

Color Correction Kit 20" x 24"

No. 110 09030 LKIT

Cinegel Sampler Kit

This is an all-purpose selection of the most popular Cinegel products. There are fifteen light control materials, including diffusion, reflection, color effects filters and color correction filters. Available either 10" x 12" in a durable plastic pouch, or 20" x 24" in a convenient tube.

Cinegel Sampler Kit 10" x 12"

No. 110 09010 SKIT

Cinegel Sampler Kit 20" x 24"

No. 110 09010 LKIT

CalColor Kit

The CalColor Kit consists of 10" x 12" sheets of the 32 colors in the CalColor range.

CalColor Kit 10" x 12"

No. 110 04000 OKIT

Diffusion Kit

Diffusion materials help modify the harsh character of a light source by softening the beam and the resulting shadows. The fifteen materials included in this kit offer a range of diffusion effects, from slight to dense, for dealing with a variety of light sources and situations. Available either 10" x 12" in a durable plastic pouch, or 20" x 24" in a convenient tube.

Diffusion Kit 10" x 12"

No. 110 09020 SKIT

Diffusion Kit 20" x 24"

No. 110 09020 LKIT

Permacolor Dichroic Glass Filters

Rosco Permacolor dichroic glass filters are the perfect choice for designers requiring long-lasting, high-quality filters. Permacolor withstands the heat of high temperature lighting fixtures like MR16, metal halide, and high wattage tungsten lamps and are ideal for use in permanent installations.

Rosco's range of standard colors includes the bright saturated colors prone to premature fading in gel as well as a selection of pale tints and accent colors selected by leading architectural designers around the world.

Color	No.	Color	No.
Bastard Amber	31002	Lilac	31055
Amber Blush	31018	Lavender 57	31057
Bright Straw	31012	Indigo	31059
Goldenrod	31013	Booster Blue	31062
Yellow	35200	Mediterranean Blue	31065
Amber	35401	Sea Blue	35700
Victorian Gold	33114	Cyan	35590
Medium Orange	35600	Light Green Blue	31076
Orange	35900	Sky Blue	35400
Flame Red	36100	Light Blue Green	35100
Primary Red	36500	Primary Blue	31080
Light Pink	31033	Medium Red Blue	34600
Pale Pink	31337	Deep Purple	34200
Medium Pink	34758	Peacock Blue	31073
Hot Pink	34630	Turquoise	34853
Deep Magenta	34763	Gaslight Green	33388
Vivid Magenta	34640	Industrial Green	31086
Lavender	34965	Light Yellow Green	34959
Mauve	31050	Fern Green	35156
Purple Fusion	31048	Primary Green	34954
Lavender Accent	31054		

Color	No.	Color	No.
White Diffusion	33026	ND .15	43415
IR/UV Block	38000	½ Minus Green	43313
UV Blocker	34000	¼ Minus Green	43314
CTO	43407	⅛ Minus Green	43318
¾ CTO	43411	CTB	43202
½ CTO	43408	¾ CTB	43203
¼ CTO	43409	½ CTB	43204
⅛ CTO	43410	¼ CTB	43208
ND .6	43403	Double Coated	
ND .3	43402	UV Pass	33660

Size	Suffix
2" x 2" (50.8 mm) square	2050
1.95" (49.5 mm) round	2049
5.25" (133 mm) round	2133
6.3" (160 mm) round	2160
8.25" (209 mm) round	2209

Custom sizes available, call for pricing.

Permacolor Frames

(Safety Grid Included)

Permacolor Frame 6.25" (for standard 5.25" size)

No. 97625

Permacolor Frame 7.5" x 7.5" (for standard 6.3" size)

No. 97750

Permacolor Frame 10" x 10" (for standard 8.25" size)

No. 97100

■ **Lens/Reflector Cleaner**

The professional's choice for over 50 years. Specially designed for cleaning lenses, mirrors, reflectors, glass and dichroic filters, and other fine quality optics.

Lens Cleaner 2 ounce drip bottle

No. 855 07202 0002

Lens Cleaner 8 ounce spray bottle

No. 855 07202 0008

Lens Cleaner 16 ounce bulk bottle

No. 855 07202 0016

■ **Lens Tissue**

Premium, lightweight, disposable, micro-fiber tissue for cleaning lenses, filters and optics.

Lens Tissue 4" x 6" booklet

No. 855 07204 0406

■ **Storage Drawers** CLEARANCE*

Heavy gauge two-inch deep corrugated drawer and sleeve that accepts 20" x 24" sheets of Rosco color filters. Shipped completely assembled. Packed six to a case.

Storage Drawers (set of 6)

No. 110 08610 0000

■ **RoscoSleeves™**

For simple and economical control of fluorescent lighting, RoscoSleeves can be supplied in any Rosco filter color—(or combination of colors) Roscolux, Cinegel, E-Colour+ and GamColor. Not recommended for use with High Output or Very High Output lamps. T5 and T8 Sleeves come standard with UV filter in addition to the color selected.

T5 x 24"	No. 110 08401 2405
T8 x 24"	No. 110 08401 2408
T12 x 24"	No. 110 08401 2412
T5 x 36"	No. 110 08401 3605
T8 x 36"	No. 110 08401 3608
T12 x 36"	No. 110 08401 3612
T5 x 48"	No. 110 08401 4805
T8 x 48"	No. 110 08401 4808
T12 x 48"	No. 110 08401 4812
T5 x 60"	No. 110 08401 6005
T8 x 60"	No. 110 08401 6008
T8 x 96"	No. 110 08401 9608
T12 x 96"	No. 110 08401 9612

■ **ChromaSleeves**

ChromaSleeves are body-colored, extruded polycarbonate sleeves with an added UV absorber to prevent premature color fading. Available in seven standard stocked colors. Not recommended for use with High Output or Very High Output lamps.

Royal Blue	No. 110 08410	Pink	No. 110 08414
Green	No. 110 08411	Yellow	No. 110 08415
Ruby Red	No. 110 08412	Amber	No. 110 08417
Purple	No. 110 08413		

Add suffix to product code for each size

T5 x 48"	4805
T8 x 48"	4808

■ **Quick Color Sleeves**

This gel-only product is a flat welded tube of Rosco color filter, made in any color from any line of Rosco gel. T5 and T8 sleeves come standard with UV filter. Quick Color Sleeves can be supplied from any color in the Roscolux, Cinegel or E-Colour+ ranges. Folded flat for easy shipping and storage, the sleeve puffs open like an envelope to slide over standard fluorescent tube. Not recommended for use with High Output or Very High Output lamps.



T5 x 24"	No. 110 08430 2405
T8 x 24"	No. 110 08430 2408
T12 x 24"	No. 110 08430 2412
T5 x 36"	No. 110 08430 3605
T8 x 36"	No. 110 08430 3608
T12 x 36"	No. 110 08430 3612
T5 x 48"	No. 110 08430 4805
T8 x 48"	No. 110 08430 4808
T12 x 48"	No. 110 08430 4812
T5 x 60"	No. 110 08430 6005
T8 x 60"	No. 110 08430 6008
T12 x 60"	No. 110 08430 6012

Please specify Rosco gel color when ordering.

■ Floor Catalog

Rosco's floor products are organized in a multi-page catalog. Available as a download at www.rosco.com



■ Dance Floor

Rosco Dance Floor is lightweight (1.9 pounds per linear foot) and is reversible with black on one side and your choice of white or grey on the other. Floor thickness is .05" (1.3 mm), width is 63" (1.6 m) and it is sold by the linear foot or full rolls 131.25 (40 m) feet long.

Black/Grey 63" x linear foot

No. 300 58720 63XX

Black/Grey 63" x 131.25 feet

No. 300 58720 6300

Black/White 63" x linear foot

No. 300 58723 63XX

Black/White 63" x 131.25 feet

No. 300 58723 6300

Blue/Green Chroma Floor 63" x 131.25 feet

No. 300 58726 6300



■ Adagio™

Adagio's durable surface can handle tap and other hard shoe dance styles, yet it is supple enough for ballet and modern dance styles. Since Adagio is dimensionally stable, it is suitable for permanent or semi-permanent installation. 2.5 lbs. per linear foot/250 lbs. per roll. Floor thickness is .06", width is 63" (1.6 m), and it is sold by the linear foot or full rolls 101.7 feet (31 m) long.

Black 63" x linear foot

No. 300 58922 63XX

Black 63" x 101.7 feet

No. 300 58922 6300

Grey 63" x linear foot

No. 300 58935 63XX

Grey 63" x 101.7 feet

No. 300 58935 6300

■ Adagio™ Tour

Adagio Tour lays flat quickly and provides the same versatile surface as Adagio. Adagio Tour weighs only 1.6 lbs. per linear foot so, as its name implies, it is excellent for touring dance companies. Floor thickness is .04", width is 63" (1.6 m) and is sold by the linear foot or full rolls 101.71 (31 m) feet long.

Black 63" x linear foot

No. 300 58622 63XX

Black 63" x 101.71 feet

No. 300 58622 6300

Grey 63" x linear foot

No. 300 58635 63XX

Grey 63" x 101.71 feet

No. 300 58635 6300

■ Arabesque™

Arabesque is, on a cost-per-square-foot basis, Rosco's most affordable floor. With a thickness of .078 inches (2mm), Arabesque offers durability that is ideal for hard-soled styles of dance such as tap, hard shoe Irish and Flamenco. Arabesque is available in a marble finish that not only helps hide scuff marks, but also adds a note of elegance to your studio. The floor is 78.74" (2 m) wide and can be specified by the linear foot or full 65.6' (20 m) roll.

Marble Black 79" x linear foot

No. 300 58222 79XX

Marble Black 79" x 65.6 feet

No. 300 58222 7900

Marble Grey 79" x linear foot

No. 300 58235 79XX

Marble Grey 79" x 65.6 feet

No. 300 58235 7900

Marble Tan 79" x linear foot

No. 300 58218 79XX

Marble Tan 79" x 65.6 feet

No. 300 8218 7900

■ Studio Floor

An ultra matte, black vinyl floor for ballet, theatre, or any application where a light-absorbing surface is needed. Studio Floor is not appropriate for heavy traffic or other types of dance. Studio Floor is .08" thick and rolls measure 6 feet wide (1.83 m) by 60 feet long (18.29 m), weighing 250 pounds. Sold by full roll only.

Studio Floor Black Matte 6' x 60'

No. 300 78035 7200

■ Performance Floor

A durable, all-purpose floor, best for permanent or semi-permanent installations in studios, multi-purpose rooms, stages and showrooms—anywhere traffic is heaviest. Available in black, white, light and dark grey. Performance Floor is .1" thick and rolls measure 6 feet wide (1.83 m) by 60 feet long (18.29 m), and weigh 280 pounds. Sold by full roll only.

Black 6' x 60'

No. 300 73035 7200

White 6' x 60'

No. 300 73030 7200

Light Grey 6' x 60'

No. 300 73031 7200

Dark Grey 6' x 60'

No. 300 73025 7200

■ Roscoleum Floor

A hardwearing floor that provides an ideal surface for the heaviest traffic areas. It stands up to tap, Flamenco and Irish dance but will easily accommodate soft shoe styles as well. .1" thick, 78.7" (2 m) wide and approximately 104.92 feet (32 m) long. Weight is 4 lbs. per linear foot, 425 lbs. per roll. Sold by full roll only.

Black 78.7" x 104.92'

No. 300 58122 7900

Grey 78.7" x 104.92'

No. 300 58135 7900

■ Show Floor

Super glossy floor for special events, commercials and fashion promotions. It is not recommended for heavy traffic or for permanent installation. Available in high gloss black, white and red. Show Floor is .08" thick, and each roll measures 6 feet wide (1.83 m) by 60 feet long (18.29 m), weighing 275 pounds. Sold by full roll only.

Black

No. 300 74035 7200

White

No. 300 74030 7200

Red

No. 300 74036 7200

■ Roscotiles

This rugged floor product is 3 foot by 3 foot (.914 m x .914 m) squares, making it easy to pick up and put down. Designed for video production facilities, each 1/8" thick, 12 pound tile is designed to lie flat for temporary, as well as permanent installations. Available in White, Black and TV Grey.

White

No. 300 08415 3636

Black

No. 300 08422 3636

TV Grey

No. 300 08435 3636

■ Rosco SubFloor

Rosco SubFloor was designed to provide the perfect combination of resilience and stability to absorb the energy from a dancer's impact when contact is made with the floor. The SubFloor's simplistic design does not need any adhesives or special hardware, which means that almost anyone can easily install it into their space. This design also enables Rosco's SubFloor to be un-installed, stored, shipped and re-installed with ease when needed. The system consists of 42" x 42" panels with closed-cell foam pads that connect to each other using Rosco's unique Wave-Lock™ design. Perimeter pieces, Ramps and Customizing Panels lock the entire floor together.

42" x 42" x 2" Panel

No. 300 08000 4242

4³/₈" x 3'6" x 2" Perimeter

No. 300 08010 0042

4³/₈" x 7' x 2" Perimeter

No. 300 08010 0084

Outside Corner

No. 300 08015 0000

Customizing Panels

No. 300 08040 4242

Inside Corner

No. 300 08016 0000

21" x 3'6" x 2" Ramp

No. 300 08020 0000

21" Corner Transition Ramp

No. 300 08021 0000



Unique WaveLock™ design assures easy installation and safe, secure flooring.

Floor Cleaners

Rosco offers different floor cleaning products, designed to meet every need. Cleaners available in liters, gallons or cases of liters or gallons.



Rosco All Purpose Floor Cleaner

Designed for the routine, regular cleaning of all Rosco vinyl floors.

- 1 liter**
No. 300 09116 0034
- 1 gallon**
No. 300 09116 0128

Rosco Heavy Duty Floor Cleaner

For stripping and deep cleaning of Rosco floors.

- 1 liter**
No. 300 09112 0034
- 1 gallon**
No. 300 09112 0128

Granulated Floor Cleanser

Granulated, dissolvable chemical for cleaning all Rosco flooring surfaces.

- 2 lb. tub**
No. 300 08710 0002



Floortapes

For installing floors in temporary and semi-permanent situations.

- Black Vinyl tape 48 mm x 33 m**
No. 851 05014 4833
- White Vinyl tape 48 mm x 33 m**
No. 851 05015 4833
- Grey Vinyl tape 48 mm x 33 m**
No. 851 05016 4833
- Clear Vinyl tape 48 mm x 33 m**
No. 851 05013 4833
- Roscofloor Double Stick tape 48 mm x 25 m**
No. 851 08740 4825

Floor Adhesives

For permanent installations. Consult a professional flooring contractor before installation.

Premium Adhesive No. 755

For most porous surfaces, including concrete which is above grade.

1 Gallon Pail (weighs 12 lbs.)

No. 300 08755 0128

3 Gallon Pail (weighs 31 lbs.)

No. 300 08755 0448

Coverage is approximately 200 sq. ft. per gallon.

Epoxy Adhesive No. 300

For non-porous surfaces and concrete below grade.

1 Gallon Kit (weighs 15 lbs.)

No. 300 08300 0128

Coverage is approximately 110 sq. ft. per gallon.

Roscoleum Adhesive

For use with Roscoleum floor only.

4 Gallons (weighs 44 lbs.)

No. 300 08100 0512

Floor Welding Threads

Welding threads are available to aid in permanent seam sealing by professional contractors. Rosco has welding threads available for Adagio, Roscoleum, Arabesque, Performance Floor, and Studio Floor.

Floor Type	Roll Length
Adagio	164 feet
Roscoleum	165 feet
Performance Floor	500 feet
Arabesque	410 feet
Studio Floor	500 feet

PortaBarre™

A truly portable ballet dance barre, Rosco's aluminum PortaBarre uses an internal double button interlocking system, making assembly and disassembly a matter of a few minutes, without requiring tools or locking keys. Sold complete with a custom designed carrying case.

9' barre with carrying case

No. 300 09095 0108

4'6" barre with carrying case

No. 300 09095 0054

Rosco Floor Bag

Designed specifically for dancers and dance companies who tour, the Rosco Floor Bag is made of durable water-resistant PVC fabric. A hook and loop fastener along the entire length of the bag keeps it securely shut while in transit, and also allows it to open flat for loading and unloading.

Rosco Floor Bag

No. 300 59000 6300

■ Model 1700™

The Rosco Model 1700 fog machine is a high quality machine that is durable, dependable and runs continuously—yet, available at an affordable cost.



Model 1700 120v with remote

No. 200 21700 0120

Model 1700 240v with remote

No. 200 21700 0240

1700/1900 DMX Remote

No. 200 51700 RDMX

50' remote extension—1700/1900

No. 200 51587 0050

100' remote extension—1700/1900

No. 200 51588 0100

Model 1700 Carrying Case

No. 200 41700 0000

4" Hose Adapter

No. 200 61690 0004

Ducting Hose 4 inch x 10 feet

No. 200 61695 0104

■ Model 1900™

Rosco's Model 1900 fog machine is a very high output, professional fog machine. The Model 1900 offers the same quality, durability and continuous operation, but produces almost twice the output of the Model 1700.



Model 1900 120v with remote

No. 200 21900 0120

Model 1900 240v with remote

No. 200 21900 0240

RDMX 1700/1900 DMX Remote

No. 200 51700 RDMX

50' remote extension—1700/1900

No. 200 51587 0050

100' remote extension—1700/1900

No. 200 51588 0100

Model 1900 Carrying Case

No. 200 41900 0000

4" Hose Adapter

No. 200 61690 0004

Ducting Hose 4 inch x 10 feet

No. 200 61695 0104

■ Alpha 900™

Rosco's most economical fog machine is an excellent choice for applications where the effect does not need volume control. A simple on-off switch, in the remote control only, initiates a remarkably powerful stream of fog.



Alpha 900 – 120v

No. 200 20900 0120

Alpha 900 – 240v

No. 200 20900 0240

Alpha 900 Carrying Case

No. 200 40900 0000

Alpha 900 30' Remote Extension Cable

No. 200 50978 0030

4" Hose Adapter

No. 200 61690 0004

Ducting Hose 4 inch x 10 feet

No. 200 61695 0104

■ Coldflow™

Converts liquid carbon dioxide to dry ice to chill an aluminum chamber. The output of a fog machine passes through the aluminum chamber and is chilled so that it lays close to the ground. For best effect use Rosco Stage & Studio Fluid.



Coldflow – 120v

No. 200 61700 0120

Coldflow – 240v

No. 200 61700 0240



■ Rosco Fog Fluid

Rosco Fog Fluid, for over 30 years is the most widely used fog fluid in theatre, live entertainment and theme parks. When vaporized, this water-based formulation produces a dense, realistic fog with a long hang time.

Fog Fluid Liter

No. 200 08200 0034

Fog Fluid 4 Liter Bottle

No. 200 08200 0135

■ Stage and Studio Fog Fluid

A water-based fluid which creates dense fog that will dissipate more quickly than standard fluid. Also recommended for use with the Rosco Coldflow to produce low-lying fog.

Stage and Studio Fog Fluid Liter

No. 200 09000 0034

Stage and Studio Fog Fluid 4 Liter Bottle

No. 200 09000 0135



Rosco has been honored by the Academy of Motion Picture Arts and Sciences® four times. One of the Oscars (in this case a Scientific and Technical Award) was for "the development of a safe, non-toxic fluid for use in motion pictures."

■ Rosco Clear Fog Fluid

Produces dense fog with a long hang time without the traditional Rosco scent.

Clear Fog Fluid Liter

No. 200 08600 0034

Clear Fog Fluid 4 Liter Bottle

No. 200 08600 0135

■ Rosco Light Fog Fluid

A water-based fluid that produces a more translucent fog, which disperses quickly into a beam-catching haze effect while maintaining a long hang time.

Light Fog Fluid Liter

No. 200 08500 0034

Light Fog Fluid 4 Liter Bottle

No. 200 08500 0135

■ F-1 Fog Fluid

Rosco's F-1 Fog Fluid is designed to be compatible with the popular High End F-100™ Fog Generator. Available in a 2.5 gallon bottle, this formulation is composed of the highest grade components available.

F-1 Fog Fluid 2.5 Gallon Bottle

No. 200 08700 0320

■ Rosco Bubble Fluid

Building on Rosco's 30+ years of success manufacturing the world's highest quality fog fluids, Rosco has developed a new formulation of bubble fluid. Engineered as a universal fluid to work in any bubble machine, Rosco's water-based Bubble Fluid creates higher volumes of extra colorful bubbles that fly higher and farther than existing fluids currently available—with next to no residue left behind, which makes it safer to use on performance and dance spaces or in areas with expensive technology.

Bubble Fluid – Gallon

200 09500 0128

■ Gobo Catalog

Rosco's Gobo Catalog lists the entire range of standard gobos available, as well as several pages of useful technical information. It is available from any Rosco office or reseller or may be downloaded from the Rosco website. You can also choose gobos from the Rosco web site (www.rosco.com) or from the free MyGobo app for iPhones, iPads, and iPod Touch.



■ Standard Designs

Rosco offers approximately 2,000 standard designs in its gobo collection. Each design is available for virtually any known fixture used in theatrical or display lighting. Rosco re-sellers can usually deliver standard gobos either off the shelf or within a day or two.

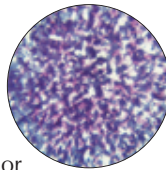


No. 77730

Standard Steel and Glass gobo designs available in all sizes.

■ Colorizers™

Multi-colored glass gobos that can be used alone or in combination with a steel gobo. Recommended for fixtures up to 1,000 watts. Requires the use of either a Glass Gobo Holder or the Universal Iris Slot Holder.



*No. 55004

Available in Standard B and most Moving Light sizes.

Also available in X size for Rosco X24 projector.

Stippled Series

Blue and Lavender	No. 55004
Amber and Red	No. 55005
Red, Blue and Lavender	No. 55006
Green, Blue and Lavender	No. 55007
Green and Yellow	No. 55008

Featherlight Series

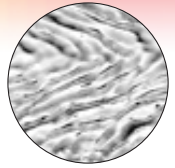
Blue, Lavender and Yellow	No. 56201
Blue and Green	No. 56202
Red, Lavender and Yellow	No. 56203
Blue and Lavender	No. 56204
Green and Yellow	No. 56205

Free Flow Series

Cool: Blues, Reds and Lavenders	No. 56101
Warm: Red, Ambers, Blue and Lavenders	No. 56102
Midnight: Blues, Lavenders and Greens	No. 56103

■ Image Glass™

Deeply textured glass gobos that bend or refract light. Recommended for use in moving lights with lamps up to 1200 watts and in ellipsoidal fixtures up to 600 watts. Requires the use of the Universal Iris Slot Holder.



No. 33621

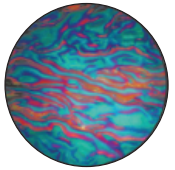
Available in Standard B and most Moving Light sizes.

Also available in X size for Rosco X24 projector.

Flower Lined	No. 33600	Random Blisters	No. 33614
Plume	No. 33601	Coalescing Bubbles	No. 33615
Lt. Plume	No. 33602	Raised Mosaic	No. 33616
Pebble	No. 33603	Hammered	No. 33617
Honeycomb	No. 33604	Wood Grain	No. 33618
Waves	No. 33605	Ripples	No. 33619
Irregular Strands	No. 33606	Ice	No. 33620
Banded Lines	No. 33607	Dune	No. 33621
Lazy Swirls	No. 33608	Sparkelite	No. 33622
Basket Weave	No. 33609	Reflections	No. 33623
Pin Feathers	No. 33610	Rain Glass	No. 33624
Winter Frost	No. 33611	Foam Bubbles	No. 33625

■ ColorWaves™

Each ColorWave glass gobo is coated in one of five dichroic colors. There are four different styles—Waves, Ripple, Strands, Mosaic—and thus 20 different choices in the range. Recommended for use in moving lights with lamps up to 1200 watts and in ellipsoidal fixtures up to 600 watts. Requires the use of the Universal Iris Slot Holder.



*No. 43104

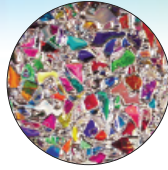
Available in Standard B and most Moving Light sizes.

Also available in X size for Rosco X24 projector.

Waves - Red	No. 33001	Mosaic - Red	No. 33301
Waves - Amber	No. 33002	Mosaic - Amber	No. 33302
Waves - Magenta	No. 33003	Mosaic - Magenta	No. 33303
Waves - Cyan	No. 33004	Mosaic - Cyan	No. 33304
Waves - Indigo	No. 33005	Mosaic - Indigo	No. 33305
Ripple - Red	No. 33101	Sparkelite - Red	No. 33401
Ripple - Amber	No. 33102	Sparkelite - Amber	No. 33402
Ripple - Magenta	No. 33103	Sparkelite - Magenta	No. 33403
Ripple - Cyan	No. 33104	Sparkelite - Cyan	No. 33404
Ripple - Indigo	No. 33105	Sparkelite - Indigo	No. 33405
Strands - Red	No. 33201		
Strands - Amber	No. 33202		
Strands - Magenta	No. 33203		
Strands - Cyan	No. 33204		
Strands - Indigo	No. 33205		

■ Prismatics™

Recommended for use in moving lights with lamps up to 1200 watts and in ellipsoidal fixtures, lamps up to 600 watts. Requires the use of the Universal Iris Slot Holder.



No. 43801

Available in Standard B and most Moving Light sizes.

Prismatics are not available for use in Rosco's X24.

Kaleidoscope	No. 43801	Fiery Sun	No. 43806
Cool Lavender	No. 43802	Warm Contrast	No. 43807
Spring Greens	No. 43803	Patriotic	No. 43808
Sunset	No. 43804	Crystalline	No. 43809
Blue Water	No. 43805		

■ Universal Iris Slot Holder

Allows a glass gobo to be placed in the iris slot of fixture in front of the gate. Double sided to allow the use of two gobos, glass and/or steel, in the iris slot at the same time. Fits the ETC Source Four, Altman Shakespeare and other modern spotlights. For use with 86 mm standard "B" size glass gobos only.



Universal Iris Slot Holder
No. 250 15786 0000

■ Glass Gobo Holders

Glass Channel Holder

BG Size Glass Gobo Holder (79 mm) — Altman fixtures
No. 250 14579 0000

Standard "B" Size Glass Gobo Holder (86 mm) — ETC S4
No. 250 14686 0000

"M" Size Glass Gobo Slot Holder — ETC Source 4 Jr.
No. 250 14666 0000

"M" Size Glass Gobo Iris Slot Holder — ETC Source 4 Jr.
No. 250 15666 0000

"A" Size Glass Gobo Iris Slot Holder — ETC Source 4
No. 250 15610 0000

■ Steel Gobo Holders

Tab Holder

"B" Size Tab Holder — Altman fixtures
No. 250 12586 0000

Sandwich Holder

"B" Size Sandwich Holder — Altman fixtures
No. 250 13586 0000

"B" Size Sandwich Holder — ETC S4
No. 250 13686 0000

"A" Size Sandwich Holder — ETC S4
No. 250 13610 0000

"M" Size Steel Gobo Slot Holder — ETC Source 4 Jr.
No. 250 13666 0000

■ iPro™ Slide Library

Designed specifically for the iPro, Rosco offers images in a wide range of categories that are certain to suit your needs for most theatrical productions and live entertainment events.



■ Custom iPro™ Slide

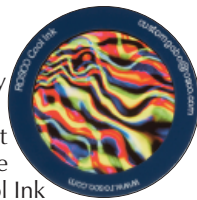
Virtually any design you can create on your computer can be made into a Custom iPro Slide in just one day. Using Adobe Photoshop or similar software, prepare your design and send it to Rosco at customgobo@rosco.com. Within 24 hours, your finished assembled iPro slide will be on its way back to you.

Custom iPro Slide

No. 265 27000 0860

■ Cool Ink™ Plastic Gobos

Cool Ink gobos are a great solution for temporary projections in many LED luminaires. Check with the fixture manufacturer, or Rosco, to ensure that your LED luminaire will accept plastic gobos. The Cool Ink gobo's rigid plastic ring secures the Cool Ink gobo for easier handling and installation*. Rosco provides fast turnaround from receiving your artwork to shipping the product, usually one business day for Cool Ink Gobos.



**As with all gobos, handle via the bezel to avoid fingerprints on the image area.*

Custom Plastic Gobo, Custom Size

No. 265 27000 0999

Cool Ink Standard Gobo Design

No. 265 27000 0000

Cool Ink Custom Plastic Gobo, "B" Size

No. 265 27000 C186

Cool Ink Custom Plastic Gobo, "E" Size

No. 265 27000 0375

Kreios Cool Ink Custom Plastic Gobo

No. 265 2700KR375

■ Cool Ink™ HD Gobos

Cool Ink HD gobos are recommended when a longer lifespan and greater projected resolution are desired from your plastic gobo. Protective coated glass layers and a metal bezel sandwich the plastic for greater durability and to allow the image area to be cleaned with a soft dry cloth (unlike straight plastic). A true opaque black background in the Cool Ink HD gobo creates the higher definition image. Rosco provides fast turnaround from receiving your artwork to shipping the product, usually just two business days for Cool Ink HD Gobos.



Cool Ink HD Custom Plastic Gobo, Custom Size

No. 265 2700HD999

Cool Ink HD Custom Plastic Gobo, "B" Size

No. 265 27000HD86

Cool Ink HD Standard Gobo Design

No. 265 2700HD000

Kreios Cool Ink Custom Plastic Gobo, specifically for Kreios units, 37.5mm

No. 255 2HDKR375

Belts vs. Gears:

The Vortex 360 and the Double Gobo Rotator, shown on the next page, use precision machined metal gears as the drive mechanism. From the motor shaft to the gobo wheel, each point of contact in the drive assembly is gear to gear. The advantages are as obvious now as they were nearly twenty years ago when these products were first designed—rock solid reliable movement and a durable, low maintenance mechanism.

The Revo, Revo PRO and Simple Spin rotators, introduced in 2011, were designed with belt drive systems. The significant benefit of the belt drive in Rosco's new rotators series is that it is virtually silent, and fully 25% quieter than other rotators. An inherent difference with belt drive is a more consistent smooth rotation as the belt is constantly in contact.

■ RevoPRO™ Gobo Rotator

A dual programmable rotator which includes complete DMX controlled indexing features plus a stand-alone programmable mode that requires no DMX. Internal 100-240v mains power, so no PSU is required. Like all Rosco Revo rotators, it is built with a high temperature silicon belt drive, stepper motors, a unique threaded collar for easy installation of glass or steel gobos, friction lock for secure placement and dimmer control capability.



RevoPRO™ Gobo Rotator
No. 205 64250 0000

■ SimpleSpin™ Dual Gobo Rotator

One stepper motor, two gobos, Rosco's SimpleSpin rotator is a variable speed device capable of rotating two gobos in opposing direction. A "set and forget" on-board speed control and direction switch is included, as is an internal universal power supply at 100-240v, 50/60hz. The device can also be controlled by connecting it to a dimmer. Like all Rosco Revo rotators, it is built with a high temperature silicon belt drive, a unique threaded collar for easy installation of glass or steel gobos and a friction lock for secure placement.



SimpleSpin™ Dual Gobo Rotator
No. 205 63100 0000

■ REVO™ Dual Indexing Rotator

Two independent variable speed stepper motors with 8 or 16-bit indexing on both wheels provide maximum design flexibility. Like all Rosco Revo rotators, it is built with a high temperature silicon belt drive, stepper motors, a unique threaded collar for easy installation of glass or steel gobos, friction lock for secure placement and dimmer control capability.



REVO™ Dual Indexing Rotator
No. 205 64200 0000

■ Revo Rotator Accessories

PSU-50

24v x 50 watt power supply
No. 205 71402 0050

PSU-51

24v x 50 watt power supply includes DMX passthrough
No. 205 71402 0051

PSU-200

24v x 200 watt power supply
No. 205 71402 0200

4 Pin Extension Cable - 25'

No. 205 70002 0025

4 Pin Extension Cable - 50'

No. 205 70002 0050

■ Vortex Gobo Rotator

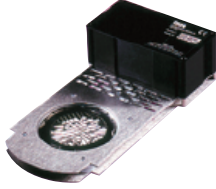
The sleek unit houses two carefully crafted drives. A single silent motor drives both assemblies. Even at full speed, the Vortex 360 Dual Rotator is so quiet it can be used anywhere in a theatre or venue. The Vortex 360 does not require any additional power supply. The transformer/plug that comes with it can be plugged directly into a wall outlet.



Vortex 360 Dual Rotator
No. 205 83000 0000

■ Double Gobo Rotator

Rosco's Double Gobo Rotator allows you to achieve kinetic and often spectacular lighting effects by rotating two gobos in the same or opposite directions, at the same or varying speeds. This unit requires a DMX/DC Controller, Variable Speed Controller or MFX Control Adaptor.



Double Gobo Rotator
DC Vari-Speed, 0-9 RPM
No. 205 21000 0120

■ Double Gobo Rotator Accessories

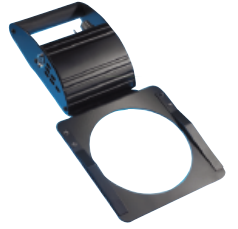
DMX/DC Controller
No. 205 45000 0120
The Rosco DMX/DC Controller provides power and speed control for the Double Gobo Rotator. It is intended for remote control via a DMX512 signal. The output circuitry of Rosco's DMX/DC Controller is identical to that of its four channel Variable Speed Controller. Speed, range, bi-directional drive, load compensation and output protection are all maintained.

Variable Speed Controller
No. 205 46000 0120
This four channel Variable Speed Controller is designed to provide power, direction and speed control for variable speed rotator units on four independent channels. Output connections are made via four conductor cables terminating in two 4-pin XLR connectors.

Mounting Kit for DC/DMX Controller and a Variable Speed Controller No. 205 70003 0KIT

■ Infinity Gobo Animation Unit

The Infinity Gobo Animation Unit, which can be attached to virtually any spotlight, is used with a steel or glass gobo in the gate to provide unusual kinetic effects. The Infinity is equipped with onboard control of the Infinity Disk speed and direction, as well as an on/off switch. Supplied with an adaptor plate and one Infinity Disk of your choice.



Infinity
No. 205 82500 0000

■ Infinity Disks

Infinity disks are etched stainless steel disks powder coated to prevent reflection. Eleven designs are available. The disks are 16.5"(42cm) in diameter.

Infinity Disks

- | | |
|--------------------------|---------------------------------|
| 30011 Tangential Breakup | 30017 Elliptical Breakup |
| 30012 Radial Breakup | 30018 Dot Breakup |
| 30013 Spiral Breakup | 30019 Flicker Breakup |
| 30014 Linear Breakup | 30020 Coarse Radial Breakup |
| 30015 Triangle Breakup | 30021 Coarse Tangential Breakup |
| 30016 Cloud Breakup | |



30011 TANGENTIAL BREAKUP



30012 RADIAL BREAKUP



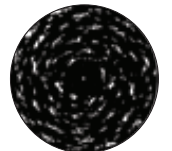
30013 SPIRAL BREAKUP



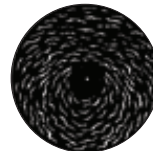
30014 LINEAR BREAKUP



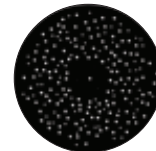
30015 TRIANGLE BREAKUP



30016 CLOUD BREAKUP



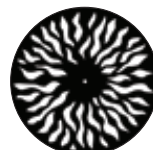
30017 ELLIPTICAL BREAKUP



30018 DOT BREAKUP



30019 FLICKER WHEEL



30020 COARSE RADIAL BREAKUP



30021 COARSE TANGENTIAL BREAKUP

■ X24 X-Effects Projector

This has become the projector of choice for shows or installations requiring a fire or water effect. It provides stunning rippling light effects previously unavailable to designers. The projector is available with on-board DMX with dowser for theatrical applications and in an analog version for retail, museum or architectural applications.



X24 DMX X-Effects - Black (lens sold separately)

No. 205 37015 0120

X24 Analog X-Effects - Black (lens sold separately)

No. 205 37020 0120

X24 DMX X-Effects - White (lens sold separately)

No. 205 37025 0120

X24 Analog X-Effects - White (lens sold separately)

No. 205 37030 0120

19 Degree Lens for X-Effects

No. 205 37119 0000

30 Degree Lens for X-Effects

No. 205 37130 0000

50 Degree Lens for X-Effects

No. 205 37150 0000

70 Degree Lens for X-Effects

No. 205 37170 0000

X24 Replacement Lamp – emARC SMR202/D1

No. 205 36101 0000

■ Power Supply Units

Rosco's power supplies are compatible with nearly all color scrollers, gobo rotators and other accessory devices in common use. The PSU-200 has four outputs and four returns. It can be pipe mounted with a C-Clamp or other hanging device. PSU-51 has a DMX passthrough.



PSU-200

PSU-200

No. 205 71402 0200

PSU-50

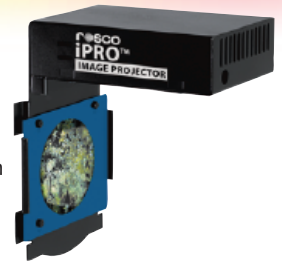
No. 205 71402 0050

PSU-51

No. 205 71402 0051

■ iPro™ Image Projector

The iPro fits as an accessory into the iris slot of a typical ETC Source Four, Altman Shakespeare, Strand SL or Selecon Pacific light fixture. Fitted with an iPro Slide, the iPro™ delivers bright, visible full-color images that will last between 15 and 50 hours.



iPro Image Projector

No. 265 25100 0120

■ iPro™ Slide Film

For use with the Rosco iPro, iPro Slide Film has been formulated from the ground up to produce the highest quality iPro Slide possible.



iPro Slide Film—10 sheet pack (LTR Size)

No. 265 27995 0010

iPro Slide Film—25 sheet pack (LTR Size)

No. 265 27995 0025

■ iPro Printing Pack

Contains 10 sheets of iPro Slide Film and 10 One-Time iPro Slide Mounts

No. 265 27985 0010

■ iPro™ One-Time Slide Mount

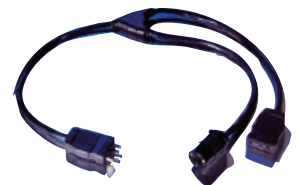
Contains the slide mount and protective film necessary to make an effective iPro Slide. Using your own transparency film and your own printer to create the image, you can then assemble a finished iPro Slide. *Transparency film not included.*

iPro Slide Mount

No. 265 27999 0860

■ Hybrid Two-Fer

This accessory allows you to connect the iPro and your light fixture into the same dimmer. The two-fer is configured with a male stage-pin connector for the dimmer and both a female stage pin connector for the light and a female parallel blade connector for the iPro.



Hybrid Two-Fer

No. 265 25500 0000

■ I-Cue Intelligent Mirror



A spotlight attachment to re-position a beam of light. This allows a single spotlight in a fixed position to be used for multiple specials in dozens of locations. Onboard DMX is included. A Power Supply Unit is necessary to get 24v DC to the I-Cue.

I-Cue

No. 205 81000 0120

■ DMX Iris



Having complete control over the beam spread of your leko just got easier. The Rosco DMX Iris is quiet, dependable, affordable, and a perfect complement to the I-Cue Moving Mirror. This 24 leaf motorized iris unit can be used with your ETC Source Four, Selecon Pacific or most other modern lekos. Unlike other iris units that have only 18 or fewer leaves in the aperture, the Rosco DMX Iris creates an even edged, perfectly round aperture all the way down to its smallest diameter. Using 1 channel of DMX512, the DMX Iris's movement is smooth even along very slow cross fades. A microprocessor controlled stepper motor connects to the mechanical arm of the iris unit, replacing the unreliable noisy chain drive system found in other products. A manual knob lets you use the DMX Iris without DMX control just by dialing in the aperture size you want, just as you would a conventional iris unit. The Rosco DMX Iris requires a non-dim circuit and is auto-sensing from 100-240 volts for use anywhere in the world. No costly external PSU is needed.

DMX Iris

No. 205 74500 0000

■ Miro Cubes™

Miro Cubes™ are innovative LED wash lights which, drawing just 48 watts, produce up to 3100 lumens of light from a luminaire that is 4 inches wide, 4 inches deep and 4 inches high.

■ Miro Cube WNC

This 4" luminaire provides 3100 lumens of bright, tunable white light. Output can be adjusted from 2800K to 6500K, for film/TV, theatrical or architectural applications.

Black housing

No. 515 90050 1020

White housing

No. 515 90050 2020



■ Miro Cube 4C

Using RGBW Quad Chip technology, this color mixing wash light offers a true white, plus a palette of saturated mid-tone and pale tint colors which can be dialed in at the touch of a button.

Black housing

No. 515 90050 1014

White housing

No. 515 90050 2014

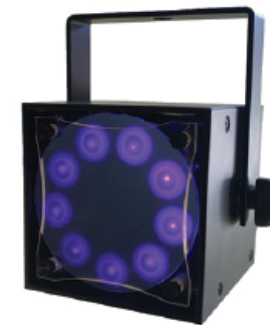


■ Miro Cube UV

The smallest, most affordable high powered UV light available to lighting professionals. The LED emitters have a 20,000 hour life assuring a virtually maintenance-free installation. The luminaire outperforms conventional long throw fixtures in virtually every category and offers full range dimming for the first time in a UV source.

Black housing

No. 515 90050 1075



■ Miro Accessories

Track Adaptor Yoke Assembly

Miro Cube Track Adapter Yokes allow the compact and lightweight Miro Cube to be powered from many common lighting track systems. These Adaptor/Yoke Assemblies replace the mounting yoke provided on the Miro Cube and allow it to be easily positioned any where along the length of track. In addition to the standard yoke assemblies offered, custom adaptor yokes can be made for most line voltage or mains powered track system around the world. Please inquire with your local Rosco representative or Distributor. *Note that Miro Cubes cannot be used on low voltage track systems.*



Track Adaptor Yoke – Halo Fixtures

No. 515 91101 0000

Track Adaptor Yoke – Juno Fixtures

No. 515 91102 0000

Track Adaptor Yoke – LSI Fixtures

No. 515 91103 0000

Track Adaptor Yoke – Custom

No. 515 91199 0000

Two Circuit DMX Data Track

Track lighting is a standard item in the lighting design tool box. It is ideal for architectural, themed environment, low ceiling height, retail and museum applications where discrete, reconfigurable, low profile fixtures and a clean look are required. The Black Tank's DMX Data Track takes track lighting to the next level by combining power and full speed DMX512 control in a single track, and track adapters allow you to integrate and control any MIRO CUBE™ fixture.



DMX Data Track provides an incredible solution for architectural installations and for reconfigurable performance spaces. The DMX data allows dynamic control of lighting, color temperature (white light) or color mixing as desired.

The specification grade surface mounted track system contains 7 conductors and includes 2 uniquely selectable power circuits. A 22 gauge nickel plated copper data bus provides full speed DMX512 control of lighting fixtures and provides control signal at any point along the track. The track consists of an extruded aluminum profile which can be easily cut to length onsite. The track also has pre-punched holes at 8" spacing for mounting.

4" White

515911110401

4" Black

515911110402

4" Silver

515911110403

8" White

515911110801

8" Black

515911110802

8" Silver

515911110803

12" White

515911111201

12" Black

515911111202

12" Silver

515911111203

■ Miro Accessories – continued

Track Adaptor Yoke with Power and DMX

White

No. 515 91110 0001

Black

No. 515 91110 0002

Silver

No. 515 91110 0003



Live End Feed

Ground Inside

White No. 515 91112 0001

Black No. 515 91112 0002

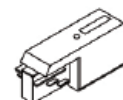
Silver No. 515 91112 0003

Ground Outside

No. 515 91113 0001

No. 515 91113 0002

No. 515 91113 0003



Straight Coupler – Track Joiner

White

No. 515 91115 0001

Black

No. 515 91115 0002

Silver

No. 515 91115 0003



L-Coupler

White

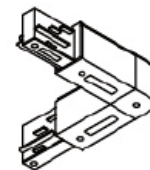
No. 515 91117 0001

Black

No. 515 91117 0002

Silver

No. 515 91117 0003



2 Circuit Flex-Coupler

White

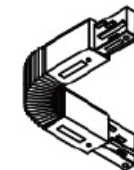
No. 515 91119 0001

Black

No. 515 91119 0002

Silver

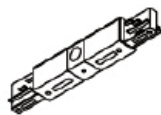
No. 515 91119 0003



■ Miro Accessories – continued

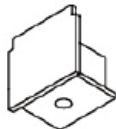
Straight Coupler – Electrical Feed

- White**
No. 515 91116 0001
- Black**
No. 515 91116 0002
- Silver**
No. 515 91116 0003



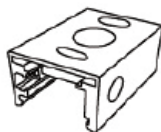
Dead End Cap

- White**
No. 515 91114 0001
- Black**
No. 515 91114 0002
- Silver**
No. 515 91114 0003



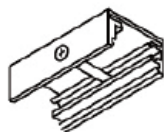
2" Mounting Clip for 3/8" Diameter Stem

- White**
No. 515 91122 0001
- Black**
No. 515 91122 0002
- Silver**
No. 515 91122 0003



Pendant Clip

- | | | |
|---------------|--------------------|--------------------|
| | 2" | 4" |
| White | No. 515 91120 0001 | No. 515 91121 0001 |
| Black | No. 515 91120 0002 | No. 515 91121 0002 |
| Silver | No. 515 91120 0003 | No. 515 91121 0003 |



3/8" Pendant Stem 24" Long

- White**
No. 515 91123 0001
- Black**
No. 515 91123 0002
- Silver**
No. 515 91123 0003



■ Miro Accessories – continued

5" Canopy – Support Only

- White**
No. 515 91126 0001
- Black**
No. 515 91126 0002
- Silver**
No. 515 91126 0003



Canopy Feed Cover

- White**
No. 515 91125 0001
- Black**
No. 515 91125 0002
- Silver**
No. 515 91125 0003



■ LitePad™ Loop

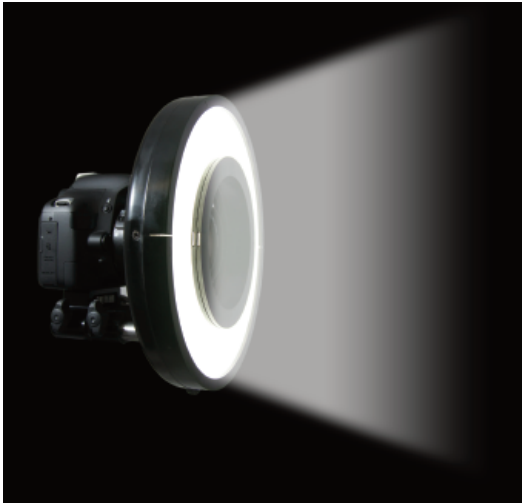
LitePad Loop™ is an innovative and unique approach to the ring light. Powered by the Rosco LitePad light engine, LitePad Loop is a soft, lightweight, and powerful ring light that can work with virtually any camera and lens system. The ingenious, two-part design allows for quick and easy attachment to the camera while its soft, diffused light is ideal for close up photography - the mode for which ring lights were designed.

LitePad Loop Retail Box

No. 291 08875 0BOX

LitePad Loop Pro Kit

No. 291 08875 0KIT



LitePad Loop Soft Beam



LitePad Loop retail box



LitePad Kit

■ LitePad™ Loop Accessories

LitePad Loop 4" L-Bracket Kit

No. 291 60001 0014

LitePad Loop 8" Rods

No. 291 20003 0208

LitePad Loop Color Filter Pack

No. 291 20000 0008

LitePad Loop Light Masks

No. 291 20000 1008

LitePad Loop AA Battery Kit

No. 291 63651 0812

LitePad Loop Anton/Bauer Bracket with Cheeseplate

No. 291 10305 0101

LitePad Loop V-Mount Bracket with Cheeseplate

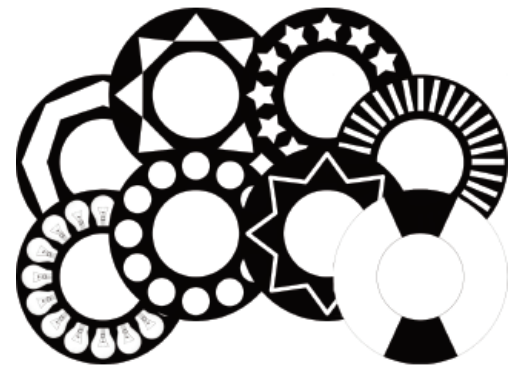
No. 291 10305 0102

LitePad Loop Light Stand Plate

No. 291 60004 0002

Thumb Screw Replacements - 4 Pack

No. 291 20002 1032



Light Masks



Battery Kit

■ LitePad Axiom

The LitePad Axiom range is a series of LED light sources designed specifically for filmmakers, videographers and photographers. The housing not only protects the light source, it also provides a universal mounting system. This allows the LitePad Axiom units to be affixed with brackets for C-Stands or other conventional methods. Each product is available with either tungsten-level or daylight-level output and with or without a transformer.

LitePad Axiom Daylight

LitePad Axiom 3" x 6" Daylight

No. 290 70306 0120

LitePad Axiom 3" x 12" Daylight

No. 290 70312 0120

LitePad Axiom 6" x 6" Daylight

No. 290 70606 0120

LitePad Axiom 6" x 12" Daylight

No. 290 70612 0120

LitePad Axiom 12" x 12" Daylight

No. 290 71212 0120

LitePad Axiom 24" x 24" Daylight

No. 290 72424 0120

LitePad Axiom Tungsten **CLEARANCE***

LitePad Axiom 3" x 6" Tungsten

No. 290 80306 0120

LitePad Axiom 3" x 12" Tungsten

No. 290 80312 0120

LitePad Axiom 6" x 6" Tungsten

No. 290 80606 0120

LitePad Axiom 6" x 12" Tungsten

No. 290 80612 0120

LitePad Axiom 12" x 12" Tungsten

No. 290 81212 0120

LitePad Axiom 24" x 24" Tungsten

No. 290 82424 0120



■ LitePad™ HO+

LitePad HO+ is a slim profile, edge-lit LED light source. At only 1/8" thick, LitePad HO+ produces a soft quality of light that is easy on the eyes and runs at cool temperatures. Available in eight standard sizes, in either tungsten-level or daylight-level outputs and with or without transformers.

LitePad HO+ Daylight

LitePad 3" x 6" HO+ Daylight

No. 290 40306 0120

LitePad 3" x 12" HO+ Daylight

No. 290 40312 0120

LitePad 6" x 6" HO+ Daylight

No. 290 40606 0120

LitePad 6" x 12" HO+ Daylight

No. 290 40612 0120

LitePad 12" x 12" HO+ Daylight

No. 290 41212 0120

LitePad 24" x 24" HO+ Daylight

No. 290 42424 0120

LitePad 3" Circle HO+ Daylight

No. 290 40003 0120

LitePad 12" Circle HO+ Daylight

No. 290 40012 0120

LitePad HO+ Tungsten **CLEARANCE***

LitePad 3" x 6" HO+ Tungsten

No. 290 50306 0120

LitePad 3" x 12" HO+ Tungsten

No. 290 50312 0120

LitePad 6" x 6" HO+ Tungsten

No. 290 50606 0120

LitePad 6" x 12" HO+ Tungsten

No. 290 50612 0120

LitePad 12" x 12" HO+ Tungsten

No. 290 51212 0120

LitePad 24" x 24" HO+ Tungsten

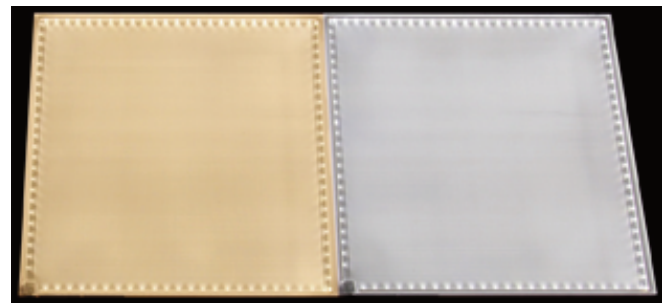
No. 290 52424 0120

LitePad 3" Circle HO+ Tungsten

No. 290 50003 0120

LitePad 12" Circle HO+ Tungsten

No. 290 50012 0120



LitePad HO+ is available in Tungsten and Daylight.

■ LitePad™ DL

LitePad DL is a slim profile (1/8") light source that delivers soft, even illumination in a sustainable, energy-efficient LED package, consuming about 40% less energy than LitePad HO+. LitePad DL was designed with event planners, theatrical lighting and architectural designers in mind, offering a more economical lighting solution for these professionals. Available in six standard sizes in daylight-level outputs and with or without transformers.

LitePad DL Daylight **CLEARANCE***

- LitePad 3" x 3" DL**
No. 290 10303 0120
- LitePad 3" x 6" DL**
No. 290 10306 0120
- LitePad 3" x 12" DL**
No. 290 10312 0120
- LitePad 6" x 6" DL**
No. 290 10606 0120
- LitePad 6" x 12" DL**
No. 290 10612 0120
- LitePad 12" x 12" DL**
No. 290 11212 0120



■ Custom LitePad™

LitePad can be fashioned into virtually any two-dimensional shape or size; up to 48" x 96" in a single piece or tiled together for larger applications. Coupled with solution-based dimming and power distribution, LitePad provides a complete lighting solution for architectural, signage or decorative lighting projects.



■ LitePad™ Kits

Rosco offers four different kits for filmmakers, digital shooters and still photographers. Each of the four is available with a full complement of Axiom LitePads and the required accessories for focusing, mounting, and coloring. Kits can be specified with either daylight-level output LitePads or tungsten-level output. A fifth kit, the HO+ Everywhere Kit, is equipped with both tungsten and daylight level HO+ LitePads.

See the Rosco web site for details on what is in each kit.

LitePad Pro Gaffer's Kit AX: Daylight

No. 290 240AXGKIT

LitePad Digital Shooters Kit AX: Daylight

No. 290 2400DSKIT

LitePad Quick Kit AX: Daylight

No. 290 240AXBKIT

LitePad Still Photo Kit AX: Daylight

No. 290 2400SPKIT

LitePad Pro Gaffer's Kit AX: Tungsten **CLEARANCE***

No. 290 241AXGKIT

LitePad Digital Shooters Kit AX: Tungsten **CLEARANCE***

No. 290 2410DSKIT

LitePad Quick Kit AX: Tungsten **CLEARANCE***

290 241AXBKIT

LitePad Still Photo Kit AX: Tungsten **CLEARANCE***

290 2410SPKIT

LitePad HO+ Everywhere Lighting Kit

No. 290 2400ELKIT



Digital Shooter LitePad Kit

■ LitePad™ Accessories

LitePad 1 amp Transformer - US style

No. 290 63501 0120

LitePad 3 amp Transformer

No. 290 63503 0120

LitePad 5 amp Transformer

No. 290 63505 0120

Car Adapter

No. 290 63600 0000

Y Splitter

No. 290 63700 0000

10 ft. Extension Cable

No. 290 63750 0000

4-Way Sputter

No. 290 63730 0000

AA Battery Holder

No. 290 63651 0812

4-Pin Adapter Cable

No. 290 63770 0012

Anton/Bauer Adapter

No. 290 63790 0012

Right Angle 10' Extension Cable

No. 290 63751 0000

LitePad 3" Mounting Bracket

No. 290 63900 0003

LitePad 6" Mounting Bracket

No. 290 63900 0006

LitePad 12" Mounting Bracket

No. 290 63900 0012

LitePad 24" Mounting Bracket

No. 290 63900 0024

1/4 – 20 Baby (5/8) Pin

No. 290 63910 1420

LitePad Axiom 1/4 – 20 Bracket

No. 290 63901 1420

LitePad Axiom Baby Pin Bracket

No. 290 63901 0058

LitePad Axiom 5/8 Receiver Bracket

No. 290 63901 0158

LitePad Axiom Wall Plate Bracket

No. 290 63901 0304

LitePad Axiom Battery Holder (for AA Battery)

No. 290 63901 8080

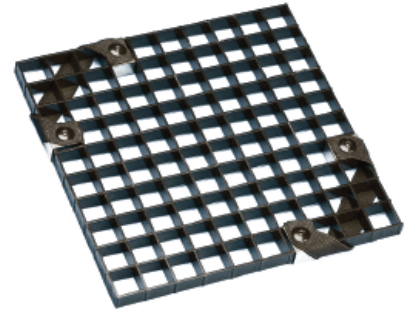


Car Adapter



Anton/Bauer Adapter

■ LitePad™ Accessories – continued



6" x 6" Eggcrate

3" x 6" Eggcrate

No. 290 65000 0306

3" x 12" Eggcrate

No. 290 65000 0312

6" x 6" Eggcrate

No. 290 65000 0606

6" x 12" Eggcrate

No. 290 65000 0612

12" x 12" Eggcrate

No. 290 65000 1212

24" x 24" Eggcrate

No. 290 65000 2424

Single Fader Dimmer

No. 290 64000 0012

2 CH/DMX Dimmer

No. 290 64100 0012



LitePad Snake Arm

LitePad Light Stand

No. 290 66104 9089

LitePad Snake Arm

No. 290 66114 2002

LitePad Swivel Arm

No. 290 66158 1420

LightPad Cold Shoe Attachment

No. 290 66100 1420

■ LitePad™ Accessories – continued

3" Circle Medium Spot Lens

No. 290 67001 0003

3" x 6" Medium Spot Lens

No. 290 67001 0306

3" x 12" Medium Spot Lens

No. 290 67001 0312

6" x 6" Medium Spot Lens

No. 290 67001 0606

6" x 12" Medium Spot Lens

No. 290 67001 0612

12" x 12" Medium Spot Lens

No. 290 67001 1212

24" x 24" Medium Spot Lens

No. 290 67001 2424

12" Circle Medium Spot Lens

No. 290 67001 0012



Full Spot Lens

3" Circle Full Spot Lens

No. 290 67002 0003

3" x 6" Full Spot Lens

No. 290 67002 0306

3" x 12" Full Spot Lens

No. 290 67002 0312

6" x 6" Full Spot Lens

No. 290 67002 0606

6" x 12" Full Spot Lens

No. 290 67002 0612

12" x 12" Full Spot Lens

No. 290 67002 1212

24" x 24" Full Spot Lens

No. 290 67002 2424

12" Circle Full Spot Lens

No. 290 67002 0012

■ LitePad™ Accessories – continued

Digital Shooter LitePad Case

No. 290 63860 0000

Still Photo LitePad Case

No. 290 63870 0000

Gaffer's AX LitePad Case

No. 290 63851 0000

Quick AX LitePad Case

No. 290 63855 0000

24" x 24" LitePad Case

No. 290 63880 0000

3" x 6" Axiom Housing

No. 290 69999 0306

3" x 12" Axiom Housing

No. 290 69999 0312

6" x 6" Axiom Housing

No. 290 69999 0606

6" x 12" Axiom Housing

No. 290 69999 0612

12" x 12" Axiom Housing

No. 290 69999 1212

24" x 24" Axiom Housing

No. 290 69999 2424



Swivel Arm

■ **Off Broadway™**

A vinyl acrylic paint which may be used on a wide variety of scenic materials including hard scenery, foam scenery, drops and ground cloths.



White	No. 150 05350
White White	No. 150 05351
Black	No. 150 05352
Yellow Ochre	No. 150 05353
Burnt Umber	No. 150 05354
Raw Sienna	No. 150 05355
Burnt Sienna	No. 150 05356
Raw Umber	No. 150 05357
Earth Umber	No. 150 05358
Ultramarine Blue	No. 150 05359
Fire Red	No. 150 05360
Deep Red	No. 150 05361
Orange	No. 150 05363
Emerald Green	No. 150 05364
Chrome Oxide Green	No. 150 05365
Lemon Yellow	No. 150 05366
Golden Yellow	No. 150 05367
Purple	No. 150 05368
Magenta	No. 150 05369
Pthalo Green	No. 150 05371
Sky Blue	No. 150 05372
Pthalo Blue	No. 150 05373
Imperial Green	No. 150 05374
Navy	No. 150 05375
Brilliant Red	No. 150 05376
Van Dyke Brown	No. 150 05380
Paynes Grey	No. 150 05382

Metallic Colors

Bright Gold	No. 150 05383
Gold	No. 150 05384
Silver	No. 150 05385
Copper	No. 150 05386
Antique Gold	No. 150 05387

Product numbers refer to color only.
Add 0640 to the product number for Five Gallons, 0128 for One Gallon, 0032 for One Quart and 0016 for One Pint.

Approximate Paint Weights:
Pint = 1.5 lbs./1 kilogram
Quart = 2.75 lbs./1.5 kilograms
Gallon = 11 lbs./5 kilograms
5 Gallon = 60 lbs./27 kilograms

■ **Iddings Deep Colors™**

Flexible casein binder with substantial quantities of ground pigment for rich, ultra-matte colors with excellent adhesion to absorbent materials.



White	No. 150 05551
Black	No. 150 05552
Yellow Ochre	No. 150 05553
Burnt Umber	No. 150 05554
Raw Sienna	No. 150 05555
Burnt Sienna	No. 150 05556
Raw Umber	No. 150 05557
Van Dyke Brown	No. 150 05558
Ultramarine Blue	No. 150 05559
Red	No. 150 05560
Dark Red	No. 150 05561
Bright Red	No. 150 05562
Orange	No. 150 05563
Emerald Green	No. 150 05564
Chrome Oxide Green	No. 150 05565
Lemon Yellow	No. 150 05566
Golden Yellow	No. 150 05567
Purple	No. 150 05568
Magenta	No. 150 05569
Turquoise Blue	No. 150 05570
Dark Green	No. 150 05571
Cerulean Blue	No. 150 05572
Navy Blue	No. 150 05573

Product numbers refer to color only. Add 0640 to the product number for Five Gallons, 0128 for One Gallon and 0032 for One Quart.

■ **Paint Sample Kits**

Off Broadway Paint Kit

No. 150 05300 OKIT
29-piece kit contains one ounce samples of each Off Broadway color plus Clear Flat and Clear Gloss.

Deep Colors Paint Kit

No. 150 05500 OKIT
23-piece kit contains one ounce samples.

Supersaturated Paint Kit

No. 150 05900 OKIT
31-piece kit contains one ounce samples (neutral base not included).

Fluorescent Paint Kit

No. 150 05700 OKIT
9-piece kit contains one ounce samples.

VividFX Sample Kit

No. 150 06200 OKIT
13-piece kit contains one ounce samples.

■ **Supersaturated Roscopaint™**

Brilliant dye-like colors formulated to be diluted with substantial quantities of water while retaining binder strength. Flexible vinyl acrylic binder. Adheres to most scenic surfaces, including muslin, plastics and metal.



Red	No. 150 05965
Green Shade Blue	No. 150 05968
Ultramarine Blue	No. 150 05969
Chrome Green	No. 150 05971
Emerald Green	No. 150 05972
Phthalo Green	No. 150 05973
Imperial Green	No. 150 05974
Magenta	No. 150 05975
Brilliant Red	No. 150 05976
Spectrum Red	No. 150 05977
Purple	No. 150 05979
Iron Red	No. 150 05980
Chrome Yellow	No. 150 05981
Yellow Ochre	No. 150 05982
Raw Sienna	No. 150 05983
Moly Orange	No. 150 05984
Burnt Umber	No. 150 05985
Raw Umber	No. 150 05986
Burnt Sienna	No. 150 05987
Lemon Yellow	No. 150 05988
Turquoise Blue	No. 150 05989
Prussian Blue	No. 150 05990
Navy Blue	No. 150 05991
Paynes Grey	No. 150 05992
Leather Lake	No. 150 05993
Grass Green	No. 150 05994
Cerulean Blue	No. 150 05996
Hunter Green	No. 150 05997
Van Dyke Brown	No. 150 05998

Product numbers refer to color only.
Add 0032 to product number for One Quart.

■ **Supersaturated Concentrated Bases™**

Neutral Base	No. 150 06001
White	No. 150 06002
Velour Black	No. 150 06003

Product numbers refer to color only.
Add 0640 to the product number for Five Gallons,
0128 for One Gallon, and 0032 for One Quart.

■ **Acrylic Glazes**

Designed to be diluted with water and applied as an overcoat to a painted surface. They can also be mixed with the paints for additional binder strength.

Clear Gloss	No. 150 05580
Clear Flat	No. 150 05581

Add 0640 to the product number for Five Gallons,
0128 for One Gallon.

■ **ColorCoat™**

Fast drying water borne acrylic enamel. Good choice for decks and floors due to its high abrasion resistance.

Clear	No. 150 05620
Clear Satin	No. 150 05621
Black	No. 150 05634
Flat Black	No. 150 05635
Aluminum	No. 150 05636

Product numbers refer to color only.
Add 0128 for One Gallon and 0032 for One Quart.

■ **Tough Prime™**



Rosco offers a unique water-based primer with adhesion properties that allow it to bond to the hard-to-prime scenic materials found in every scene shop. Tough Prime covers just about any surface, including PVC pipe, aluminum, foams and concrete floors, as well as wood and foam core.

Tough Prime White	No. 150 06050
Tough Prime Black	No. 150 06055

Add 0032 to the product number for Quarts,
0128 for One Gallon and 0640 for Five Gallons.

■ **Fluorescent Paint**

Vivid vinyl acrylic colors are brilliant in normal light and glow brightly when bathed in ultraviolet light. White fluoresces a light blue under black light. Invisible blue appears milky white under normal light but glows blue in ultraviolet.

White	No. 150 05779
Red	No. 150 05780
Orange	No. 150 05781
Yellow	No. 150 05782
Green	No. 150 05783
Blue	No. 150 05784
Invisible Blue	No. 150 05785
Pink	No. 150 05786
Gold	No. 150 05787

■ **Vivid FX™**

The exceptional pigments in Vivid FX glow most brilliantly between 365-380 nanometers. This creates stunning black light effects and the colors intermix cleanly to provide a wide array of intermediate fluorescent hues.

Bright White	No. 150 06250
Lemon Yellow	No. 150 06251
Orange Sunset	No. 150 06252
Orange	No. 150 06253
Scarlet Red	No. 150 06254
Hot Pink	No. 150 06255
Magenta	No. 150 06256
Violet	No. 150 06257
Deep Blue	No. 150 06258
Brilliant Blue	No. 150 06259
Aquamarine	No. 150 06260
Electric Green	No. 150 06261
Deep Green	No. 150 06262

■ **Roscoglo™**

A phosphorescent water-based paint designed for use in total darkness for stage direction and visual orientation.

Ounce	No. 150 05666 0001
Pint	No. 150 05666 0016

■ **Rosco Fitch Brushes**

Rosco's professional quality scenic fitches, often called lining brushes, are available individually and in two handy kits. All brushes feature seamless ferrules and natural bristles.



Brush No. 155 05610 (add number in parentheses for each size)

¼" Fitch	(0025)
½" Fitch	(0050)
¾" Fitch	(0075)
1" Fitch	(0100)
1¼" Fitch	(0125)
1½" Fitch	(0150)
2" Fitch	(0200)
3" Fitch	(0300)

7 Brush Set No. 155 056107KIT
Includes fitches whose ferrule widths are:
¼", ½", ¾", 1", 1¼", 1½" and 2"

8 Brush Set No. 155 056108KIT
Includes all the brushes in the 7 Brush Kit plus a 3" Fitch Foliage

■ **Premiere Clear**

Water-borne urethane coating suitable for sealing and protecting painted finishes, floors, and high-traffic surfaces.

Add 0128 to the product number for One Gallon and 0032 for One Quart.

- Premiere Clear Flat** No. 150 06830
- Premiere Clear Satin** No. 150 06820
- Premiere Clear Gloss** No. 150 06810



■ **CrystalGel™**

Rosco CrystalGel is a non-toxic, water-based material which provides a clear, plastic-like coating on virtually any surface used in modern stagecraft.

- CrystalGel Gallon**
No. 150 07400 0128
- CrystalGel 5 Gallon**
No. 150 07400 0640



■ **Foamcoat™**

Water-based, flame retardant, protective coating for all rigid foams. Foamcoat dries to a super hard durable coating that resists chipping and cracking.

- Foamcoat Gallon**
No. 150 07100 0128
- Foamcoat 3½ Gallons**
No. 150 07100 0448



■ **Flexcoat™**

Flexible, non-toxic, water-based coating for polyurethane and polystyrene foam. It contains no plasticizers, so it will not become brittle with age or exterior exposure.

- Flexcoat Gallon**
No. 150 07120 0128
- Flexcoat 5 Gallon**
No. 150 07120 0640



■ **FlexBond™**

Clear, flexible scenic glue which bonds many porous and non-porous scenic materials. Rosco FlexBond dries to a clear, hard, yet pliable coating that does not suffer from the “tackiness” common in many other flexible glues.

- FlexBond Gallon Jug**
No. 150 07500 0128
- FlexBond 5 Gallon Pail**
No. 150 07500 0640



■ **Rosco Flamex NF/Natural Fiber Flame Retardant**

Should be used on fabrics like cotton, linen, wool, burlap and most other materials made of natural fibers. Premixed for use straight out of the bottle, NF is perfect for treating backdrops, velours, muslin cycloramas and decorative fabric panels.

- Flamex NF Gallon**
No. 150 079NF 0128

■ **Rosco Flamex SF/Synthetic Fiber Flame Retardant**

Effectively treats many synthetic fibers, such as polyesters, nylons, acrylics and rayons, as well as most cotton/synthetic blends. Premixed for use straight out of the bottle.

- Flamex SF Gallon**
No. 150 079SF 0128

■ **Rosco Flamex DF/Delicate Fabrics Flame Retardant**

Use for synthetic weaves, rayon or silk. Premixed for use straight out of the bottle, DF maintains the gentleness and soft hand of fragile fabrics and draperies.

- Flamex DF Gallon**
No.150 079DF 0128

■ **Rosco Flamex PC/Paper and Cardboard Flame Retardant**

Effectively treats papers and un-waxed cardboard materials. Premixed for use straight out of the bottle, PC is perfect for props and set pieces made from flammable paper products.

- Flamex PC Gallon**
No. 150 079PC 0128

■ **Rosco Flamex WD/Raw Wood Penetrating Flame Retardant**

WD is intended for untreated wood, plywood, cellulose board, acoustical board and corrugated paper.

- Flamex WD Gallon**
No. 150 079WD 0128

■ **Rosco Flamex PA/Latex Paint Additive Flame Retardant**

PA can be added to most latex or water based paints in order to create a flame retardant paint film. PA is useful for treating scenic materials that cannot easily be treated by other methods and for supplying the additional protection of a fire retardant paint coating.

- Flamex PA 8-oz jar**
No. 150 079PA 0008
- Flamex PA Case of 12 jars**
No. 150 079PA 1208

■ **TV Paint™**

Specifically formulated for the sensitive contrast requirements of standard television systems, this versatile acrylic paint can be applied to nearly any surface and comes ready to use right out of the bucket.

TV White – A neutral grey that meets the specifications for 60% reflectance (maximum brightness intended for transmission).

Gallon
No. 150 05735 0128

TV Black – A rich, matte black that meets the specifications for 3% reflectance (minimum brightness intended for transmission).

Gallon
No. 150 05740 0128

■ **Keying Paints**

Video Paint Ultimatte™

Designed with the Ultimatte® technical staff to meet the requirements of their keying effects systems.

Ultimatte® Blue

No. 150 05720

Ultimatte® Green

No. 150 05721

Ultimatte® Super Blue

No. 150 05722

For One Gallon add 0128 to product number.

For Five Gallon, add 0640 to product number.

Chroma Key™

Specifically formulated to provide high luminance values and color saturation for keying effects. The acrylic colors provide high build, one-coat coverage for use on nearly any surface.

Chroma Key Blue

No. 150 05710

Chroma Key Green

No. 150 05711

For One Gallon add 0128 to product number.

For Five Gallon add 0640 to product number.

■ **DigiComp™ Materials**

DigiComp is Rosco's trade name for paint and cable precisely crafted to allow seamless compositing for film, video and digital use. In the modern compositing or matting process

■ **DigiComp® Paint**

DigiComp Blue

One Gallon
No. 150 05705 0128

Five Gallon
No. 150 05705 0640

DigiComp Green

One Gallon
No. 150 05707 0128

Five Gallon
No. 150 05707 0640

■ **DigiComp Cable** **CLEARANCE***

3/32" (2.4 mm) DigiComp cable

1/16" (1.6 mm) 7x7, coated diameter 3/32" (2.4 mm)

480 lb. (217 kg) rating, 500' (152 m) spool

DigiComp Green Cable

No. 850 57075 0938

DigiComp Blue Cable

No. 850 57055 0938

3/16" (4.8 mm) DigiComp cable

1/8" (3.2 mm) 7x19, coated diameter 3/16" (4.8 mm)

2000 lb. (917 kg) rating, 500' (152 m) spool

DigiComp Green Cable

No. 850 57075 1875

DigiComp Blue Cable

No. 850 57055 1875

1/4" (6.4 mm) DigiComp cable

3/16" (4.8 mm) 7x19, coated diameter 1/4" (6.4 mm)

4200 lb. (1905 kg) rating, 500' (152 m) spool

DigiComp Green Cable

No. 850 57075 2500

DigiComp Blue Cable

No. 850 57055 2500

■ Cinefoil

Cinefoil is a matte black aluminum material used for masking light leaks and/or eliminating unwanted reflections. It can be quickly molded to form barndoors, flags and other configurations.



- Cinefoil 24" x 25'**
No. 101 01001 2425
- Cinefoil 12" x 50'**
No. 101 01001 1250
- Cinefoil 48" x 25'**
No. 101 01001 4825

Cinefoil is also available in shorter lengths for still photographers, videographers and students. Called Photofoil it offers the same light control properties at an economical price.

- Matte Black Photofoil, 12" x 10'**
No. 101 01001 1210
- Matte Black Photofoil, 24" x 10'**
No. 101 01001 2410

■ Butterflies and Overheads

A number of Cinegel materials are available to fit the standard butterfly and overhead frames used in motion picture and television production. All materials are supplied edge-finished with binding and grommets on 24" centers and sewn hems, except for No. 3014 Hilite and No. 3029 Silent Frost. The latter two have an ultrasonic welded seam every 48".

- | | |
|-----------------------------------|----------|
| Silent Frost | No. 3029 |
| Grid Cloth | No. 3030 |
| Light Grid Cloth | No. 3032 |
| ¼ Grid Cloth | No. 3034 |
| Silent Grid Cloth™ | No. 3060 |
| Silent Light Grid Cloth™ | No. 3062 |
| Silent ¼ Light Grid Cloth™ | No. 3064 |
| Hilite | No. 3014 |
| Full Blue Grid Cloth | No. 3071 |
| ½ Blue Grid Cloth | No. 3072 |
| Blue Grid Cloth | No. 3073 |
| Full Straw Grid Cloth | No. 3081 |
| ½ Straw Grid Cloth | No. 3082 |
| Straw Grid Cloth | No. 3083 |
| Moonlight Grid Cloth | No. 3090 |

Prices for Butterfly and Overhead materials

(except for No. 3014 Hilite)

- | | |
|------------------|------------------|
| 6' x 6' | 8' x 8' |
| 12' x 12' | 20' x 20' |

Hilite:

- | | |
|------------------|------------------|
| No. 3014 | |
| 6' x 6' | 8' x 8' |
| 12' x 12' | 20' x 20' |

■ Acrylic Panels

Acrylic sheets for daylight correction or light intensity reduction. Available in 4' x 8' and 5' x 8' sheets. Minimum quantity of 5.

- | | |
|-----------------------|----------|
| Roscolex 85 | No. 3761 |
| Roscolex ½ CTO | No. 3751 |
| Roscolex N.3 | No. 3762 |
| Roscolex N.6 | No. 3763 |
| Roscolex N.9 | No. 3764 |

■ Roscopak™

Roscopak material is light in weight, yet strong and durable. The material can be taped or tacked to virtually any wall, ceiling or panel to turn that area into an efficient reflector. Roscopak measures 4' x 4½' (1.2 x 1.4 m), and is packaged in a handy pocket size pouch.

- Roscopak S/G (silver/gold)**
No. 08509 4854

■ Reflection Media

Used for surfacing reflector boards or wherever reflected light is required. The product designation generally indicates the quality of the reflection. Rolls are 48" x 25' (122 cm x 7.6 m).

- | | |
|--|--|
| Roscoflex M (mirror)
No. 3801 | RoscoScrim
(perforated silver/black)
No. 3809 |
| Roscoflex H (hard)
No. 3802 | Featherflex S/G
(silver/gold)
No. 3812 |
| Roscoflex S (soft)
No. 3803 | Thin Mirror - S (60" x 20')
No. 3813 |
| Roscoflex SS (supersoft)
No. 3804 | Thin Mirror - G (60" x 20')
No. 3814 |
| Roscoflex G (gold tinted)
No. 3805 | Cinebounce - White/Black
No. 3840 |
| Spun Silver
No. 3830 | |

■ Polarizing Filters

A neutral grey linear polarizing film used in front of lights to reduce the glare caused by smooth surfaces such as glass, water, paper and certain metallic objects. Should be placed at a slight distance from hot lights.

- Sheet: 17" x 20"**
No. 07300 1720
- Roll: 17" x 10'**
No. 07300 1710

■ RoscoVIEW™

RoscoView is a unique two-part window control system for film and television professionals. It consists of wide width polarizing filter installed on windows and a matching camera polarizing filter. Rotating the camera filter results in 100% control of exterior brightness as seen through the window.

P.O.A. See the demo video at
<http://www.rosco.com/us/video/roscoview.cfm>

■ RoscoShades™

The RoscoShade system allows television professionals to quickly and conveniently balance outdoor and studio light when there is a window in the TV or video picture. Custom filter shades are made to precisely fit the studio windows, so there is no light or glare. You can choose the filtration you need and have it in place in just a few minutes by electronically or manually lowering or retracting the appropriate material.

Details and a demo video at
<http://www.rosco.com/FTVP/rosco Shades.cfm>

Hinges and Pin Wire

Hinges are generally used as an aid in attaching scenery flats. Three types are available. Loose Pin Hinges with removable pins; Tight Pin Hinges with permanent pins. The Sure Hinge is a special type of loose pin hinge with interchangeable halves. It is scored so you can bend it around nominal 1" lumber.



Loose Pin Hinge



Tight Pin Hinge



Sure Hinge

1.5" Loose Pin Hinge – Box of 12 hinges

No. 850 73100 0001

1.5" Tight Pin Hinge – Box of 12 hinges

No. 850 73150 0001

2" Loose Pin Hinge – Box of 12 hinges

No. 850 73200 0002

2" Tight Pin Hinge – Box of 12 hinges

No. 850 73250 0002

Sure Hinge – Box of 12 hinges

No. 850 73300 0000

Pin Wire – One-pound bundle.

No. 850 73500 0000

Often used as an alternate pin in hinges and for other stage purposes.

Sure Clamp™

The Sure Clamp has a grip range of 1½" to 2" and is used to hang lighting fixtures or scenery directly to pipes. An extra-secure substitute for the standard C-Clamp, it closes automatically when weight is hung on it and is further secured by a hand knob which requires no tools for adjustment.



Sure Clamp

No. 850 78020 0000

Wagon Brakes

Mounted to the side of a platform or scenery, this brake actually lifts the scenery off its casters, preventing the wagon from shifting under active actor movements. A unique lever action pushes down a plunger, lifting even very heavy pieces with only minimal force required from a stagehand. A minimum of two brakes per unit are recommended.



Wagon Brake w/Extension Spindle (5/16" x 21/2") (300 lb. max.)

No. 850 74510 0000

Heavy Duty Wagon Brake (800 lb. max.)

No. 850 74550 0000

Heavy Duty Extension Spindle (optional)

No. 850 74555 0000

Sandbags

These sandbags are carefully rated for the weight of sand they will hold. Made from strong canvas, reinforced with a sling, and equipped with a heavy metal hook and safety catch. Sand is not included.



No. 850 72610 Sandbag (add 4 digits for size)

10 pound sandbag	(0010)
25 pound sandbag	(0025)
50 pound sandbag	(0050)
75 pound sandbag	(0075)
100 pound sandbag	(0100)
150 pound sandbag	(0150)
200 pound sandbag	(0200)

Belay Pins **CLEARANCE***

17" Wood Belay Pin

No. 850 71700 0017

Solid hickory wood, with an easy grip handle. 1½" diameter

21" Wood Belay Pin

No. 850 71700 0021

Same as above but with 4" longer shaft and 1½" diameter

Stage Screws

Stage screws are used to fasten flats or scenery pieces to the stage floor.



Steel Stage Screw



Stage Plug

They go directly into the wood stage floor. The Steel Stage Screw should be used when the screw must be used in the same place several times, or where exceptional holding power is needed. To use the Steel Stage Screw, drill a ⅝" hole, screw the Stage Plug into the floor with a wide straight blade screwdriver, then fit the screw into the plug.

Stage Screw

No. 850 74200 0000

Steel Stage Screw

No. 850 74100 0000

⅜" diameter. Heavy steel w/ zinc plating.

Stage Plug

No. 850 74150 0000

Used with Steel Stage Screw, but sold separately. For ⅝" hole.



76310
Top Hanger Iron



76410
D-Ring Plate with Ring



76220
Ceiling Plate with Ring



76320
Bottom Hanger Iron

■ Hanging and Attaching Hardware

Ceiling Plate With Ring

No. 850 76220 0000

Lines or cable are more easily attached with this device affixed to the ceiling of a box set. May also be used to hang relatively lightweight scenery.

Top Hanger Iron

No. 850 76310 0000

Affixed to the top of a scenery flat for hanging.

Bottom Hanger Iron

No. 850 76320 0000

Fits under the bottom member of a scenery flat. Usually secured parallel to the Top Hanging Iron.

D-Ring Plate with Ring

No. 850 76410 0000

The floor plate bolts to the stage floor and lines may be tied off through the D-ring.

■ Flicker Candles™

A theatrical alternative to flame candles, these units look and act just like the real thing . . . right down to the dripped wax. Most importantly, they are powered electrically, so they don't present potential hazards of using live flames. A simple 9-volt AC Adaptor allows you to raise or lower the dimming level on the Flicker Candles.



Professional Flicker Candle

No. 854 09001 0017

17½" long by 1½" in diameter. Comes with 4 foot leads for remote installation to a power source.

Self-Contained

No. 854 08903 0009

Complete with a candle tip, a realistic stem with a dripping wax look, an on-off switch, and connection for a 9 volt battery, this 9¾" unit is for productions where the performers need to carry a candle from place to place or where the candle needs to be turned "on" or "off" during the show.

Wired Stem

No. 854 08902 0009

The Wired Stem Model is 9¾" and consists of the candle tip, candle stem and 4 foot leads for remote installation to a power source.

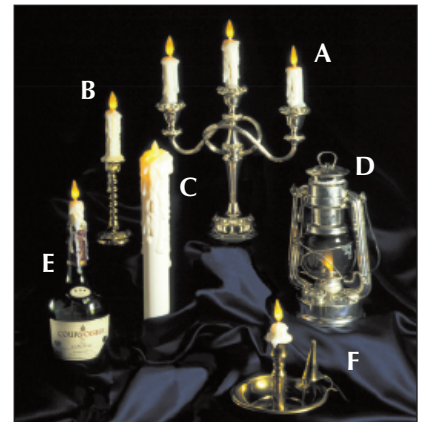
Basic Module

No. 854 08901 0004

The Basic Module is a 4" long unit with short pins for wiring to a power source and is ideal for building custom units.

■ Custom Candle Range

Rosco Flicker Candles can be custom built into many popular settings. Here are some examples of the bases and specialty settings available.



A Three Arm Candelabra

No. 854 09002 0000

B Single Candlestick

No. 854 09004 0000

C Professional Flicker Candle

No. 854 09001 0017

D Classic Hurricane Lantern

No. 854 09003 0000

E Classic bottle with realistic dripping wax

No. 854 09006 0000

F Classic saucer holder

No. 854 09005 0000

■ 20-Amp Dual Termination Connectors



Direct wire or lugged connections. All the necessary hardware for either style is included with each connector. Included strain relief inserts allow the connector to grip standard industry cables ranging from 12/3 stage cable to sleeved fixture leads.

20 amp male DTConnectors

No. 12120

20 amp female DTConnectors

No. 22120

Connector hardware is available in bulk packs for large shops or installation projects. The bulk pack contains hardware sufficient for 100 connectors packed by like type for binning on the assembly bench. Also available are 20-count packages of connectors. These are supplied with a set of hardware conveniently packed with each connector.

To order 20-count packages of male connectors, use Product Code 203 12120 2020; for 20-count packages of female connectors use Product Code 203 22120 2020.

Color Covers

Connectors can be equipped with your choice of colored covers. Only available in 100 count boxes of covers.

Black – 100 count

No. 203 00232 0100

Red – 100 count

No. 203 00332 0100

Green – 100 count

No. 203 00432 0100

Blue – 100 count

No. 203 00532 0100

Yellow – 100 count

No. 203 00632 0100

Clear – 100 count

No. 203 00732 0100



Personalized Connectors

20-amp DTConnectors can be personalized with a company or organization name or logo on the cover. Personalized covers can be supplied with new connector orders or as replacement covers for existing Rosco connectors.

Connector engraving charge

No. 22000

■ Auxiliary Strain Relief

A supplemental Strain Relief is available for the DT Connector when used with undersized cable. It will accept up to 16/3 Type S cable.

Auxiliary Strain Relief

No. 203 80002 2001

■ 60A Connectors

Rosco's 60 amp connectors are available in both panel mount and cable end configurations. UL-listed.

60A Male Plug

No. 203 10126 6001

60A Female Receptacle

No. 203 20126 6001

■ Adapters

Rosco Adapters are designed to quickly adapt Rosco 20A Connectors to the most common connections found: Twistlock and U-ground. Unibody construction and internally wired at the factory.

20A M Pin to 15A F U-ground

No. 203 70005 2001

20A M Pin to 20A F Twistlock

No. 203 70003 2001

20A F Pin to 15A M U-ground

No. 203 70007 2001

20A F Pin to 20A M Twistlock

No. 203 70004 2001

■ Panel Mount Connectors

Made of high heat resistant material, the Rosco Panel Mount Connector conforms to industry standards for compatibility and installation. UL-listed.

20A Male Panel Mount

No. 203 50002 2001

60A Female Panel Mount

No. 203 60006 6001

20A Female Panel Mount

No. 203 60002 2001

60A Male Panel Mount

No. 203 50006 6001



■ Gaffers Tape

A premium quality cotton substrate, coated with heavy-duty vinyl.

Rubber based adhesive has high tack with excellent adhesion but will not leave a sticky residue.

Rolls measure 48mm x 50m (1.9" x 54.6 yds.)

Black	No. 851 42221 4850
Grey	No. 851 42223 4850
Red	No. 851 42339 4850
Yellow	No. 851 42342 4850
Blue	No. 851 42340 4850
Electric Blue	No. 851 42338 4850
Fluorescent Green	No. 851 42346 4850
White	No. 851 42222 4850

■ Spike Tape

12mm cloth tape for marking location of actors and scenery on stage floors. 25m roll.

Red	No. 851 05210 1225
Yellow	No. 851 05220 1225
Blue	No. 851 05230 1225
Green	No. 851 05240 1225
White	No. 851 05250 1225

■ Glow Tape

Glow-in-the-dark tape ideal for marking low light areas. It glows to a yellow-green color that can remain illuminated for hours. 24mm wide.

5m roll (16.35 ft.)	No. 851 05000 2405
10m roll (32.7 ft.)	No. 851 05000 2410
30m roll	No. 851 05000 2430

■ Caution Tape

48mm vinyl tape has alternating bands of bright yellow and black. It is perfect for marking backstage areas that are off-limits or dangerous. 16.5m roll.

Black/Yellow	No. 851 02288 4816
---------------------	--------------------

■ Slit Drape

This Rosco version of slash curtain consists of overlapping 1/8" strips of durable, flame retardant vinyl, 36" wide (91.44 cm). Add 4-digit number in parentheses to product number to indicate length desired.



Solid Black	8'	(0008)	No. 350 02610
	16'	(0016)	
	24'	(0024)	
Solid Silver	8'	(0008)	No. 350 02609
	16'	(0016)	
	24'	(0024)	
Solid Gold	8'	(0008)	No. 350 02625
	16'	(0016)	
	24'	(0024)	
Black/Silver	8'	(0008)	No. 350 02608
	16'	(0016)	
	24'	(0024)	
Black/Gold	8'	(0008)	No. 350 02602
	16'	(0016)	
	24'	(0024)	
Black/Diffraction	8'	(0008)	No. 350 02600
	16'	(0016)	
	24'	(0024)	
White/Diffraction	8'	(0008)	No. 350 02606
	16'	(0016)	
	24'	(0024)	
Silver/Diffraction	8'	(0008)	No. 350 02601
	16'	(0016)	
	24'	(0024)	
Iridescent	8'	(0008)	No. 350 02630
	16'	(0016)	
	24'	(0024)	
Silver/Iridescent/Gold	8'	(0008)	No. 350 02634
	16'	(0016)	
	24'	(0024)	
Silver/Gold/Diffraction	8'	(0008)	No. 350 02636
	16'	(0016)	
	24'	(0024)	

■ Showcloth™

A weave of thread and self extinguishing plastic strips produces an elegant, shimmering fabric with a soft hand and beautiful drape. Showcloth has a selvedge edge for easy sewing.

Roll 47" x 30 ft.
Bolt 47" x 330 ft.

White/Gold	No. 352 62101
Black/Gold	No. 352 62102
White/Silver	No. 352 62103
White/Iridescent	No. 352 62104
Black/Silver	No. 352 62105
Black/Black	No. 352 62106
Black/Iridescent	No. 352 62107

Add 4730 to product number for 30 ft. roll.
Add 4701 to product number for 330 ft. bolt.

■ Glamé™

Glamé is woven from a durable, lightweight, self-extinguishing plastic film



48" x 30 ft. roll. 330 ft. bolts also available.

Silver	No. 353 52006
Gold	No. 353 52009
Silver/Black	No. 353 52012
Gold/Black	No. 353 52013
Gold/Silver	No. 353 52014
Silver/Diffraction	No. 353 52032
Gold/Diffraction	No. 353 52033
Clear/Diffraction	No. 353 52034
Iridescent/Diffraction	No. 353 52035
Razzle Dazzle	No. 353 52041
Black	No. 353 52045
Black/Iridescent	No. 353 52052
Silver/Iridescent	No. 353 52053
Gold/Iridescent	No. 353 52054

Add 4830 to product number for 30 ft. roll.
Add 4801 to product number for 330 ft. bolt.

■ Shimmer Scrim™

Shimmer Scrim is a combination of thread and plastic film woven into a theatrical fabric. This self-extinguishing fabric may be used for traditional scrim effects or as a shimmering, airy drape. It has a selvedge edge for easy sewing.

Roll (47" x 30 ft.)
Bolt (47" x 330 ft.)

White/Iridescent/Gold	No. 351 41001
White/Clear/Iridescent	No. 351 41005
White/Iridescent/White	No. 351 41011
Black/Clear/Silver	No. 351 42001
Black/Clear/Iridescent	No. 351 42005
Black/Clear/Black	No. 351 42011
Black/Gold/Clear	No. 351 42021

Add 4730 to product number for 30 ft. roll.
Add 4701 to product number for 330 ft. bolt.

■ Glitter CLEARANCE*

RoscoGlitter, in 1/8" hexagonal chips, is uniquely suited for production applications. The chips are brilliant under stage lights and can be sprinkled on or mixed directly into Clear Gloss or Flat Acrylic for easy application. Small is 4 oz., large is 16 oz. except where noted.

Silver	No. 360 02890
Gold	No. 360 02891
Red	No. 360 02893
Sky Blue	No. 360 02894
Royal Blue	No. 360 02895
Green	No. 360 02897
Fuchsia	No. 360 02898
Pink Fizz	No. 360 02902
Blue/Green Iridescent	No. 360 02904*

*Note: small is 3 oz. and large is 12 oz.
Add 0004 to number for small; add 0016 for large.

■ Breakaways

Plastic breakaways shatter realistically and are specially packaged to assure that they are delivered intact. Bottles are shipped with labels unattached for easy customization. Minimum order: 6 breakaways. (Bottles must be the same color.)



1/2 dozen

Beer Bottle - Amber	No. 852 80011 0000
Beer Bottle - Green	No. 852 80012 0000
Whiskey Bottle - Amber	No. 852 80031 0000
Whiskey Bottle - Green	No. 852 80032 0000
Wine Bottle - Amber	No. 852 80051 0000
Wine Bottle - Green	No. 852 80052 0000

■ Mirrors

A variety of reflective surfaces in a metalized plastic format.

Flexible Silver (48" x 30')	No. 359 03906 4830
Thin Silver (60" x 30')	No. 359 03925 6030
Thin Gold (60" x 30')	No. 359 03927 6030
Rigid Gold (51" x 30')	No. 359 03930 5130
Rigid Silver (51" x 30')	No. 359 03931 5130

■ Shrink Mirror™

Rosco's Silver Shrink Mirror is a lightweight substitute for heavy glass mirror. This metalized plastic laminate is designed to be mounted to a frame and heat shrunk for superior reflectance. 54" x 30'



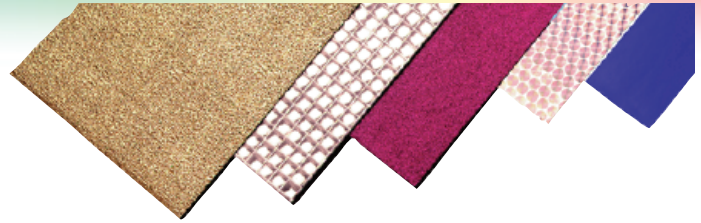
Silver Shrink Mirror	No. 359 03909 5430
-----------------------------	--------------------

■ Smooths™ CLEARANCE*

The smooth colors are pressure-sensitive for easy mounting.

24" x 30' rolls (61 cm x 9.2 m).

Bright Orange	No. 355 03974 2430
Gun Metal Grey	No. 355 03975 2430
Cherry Red	No. 355 03976 2430
Royal Blue	No. 355 03980 2430
Silver	No. 355 03981 2430
Pink Fizz	No. 355 03983 2430
Light Gold	No. 355 03985 2430
Smooth Iridescent	No. 355 03986 2430



■ Metalix™ CLEARANCE*

This durable metalized plastic material is available in a variety of colors and surfaces.

Metalix 48" x 30' roll

Silver Pebble	No. 356 03902 4830
Soft Silver	No. 356 03971 4830
Gold Pebble	No. 356 03972 4830

■ Multi-Lens™ CLEARANCE*

A laser etched plastic film with the 3-D look of glass lenses. Pressure sensitive for easy mounting.

Multi-Lens 24" x 15' rolls

1/2" Silver	No. 357 04910 2415
1/2" Gold	No. 357 04915 2415
2" Silver	No. 357 04920 2415
2" Gold	No. 357 04925 2415

■ Diffractions™ CLEARANCE*

Five laser etched plastic films for prismatic effects. All the diffractions are adhesive backed.

Diffractions 24" x 15' rolls

Exotic Circles	No. 358 02956 2415
Exotic Hex	No. 358 02957 2415
1/4" Mosaic	No. 358 02960 2415
Horizontal Stripes	No. 358 02962 2415

■ Sparklene™ CLEARANCE*

Eleven glitter laminate plastic film colors. Sparklene is pressure sensitive for easy mounting.

Sparklene 24" x 15' rolls (61 cm x 4.6 m).

Silver	No. 354 03990 2415
Blue	No. 354 03991 2415
Red	No. 354 03992 2415
Green	No. 354 03993 2415
Fuchsia	No. 354 03994 2415
Gold	No. 354 03995 2415
Fluorescent Pink	No. 354 03961 2415
Blue/Green Iridescent	No. 354 03964 2415